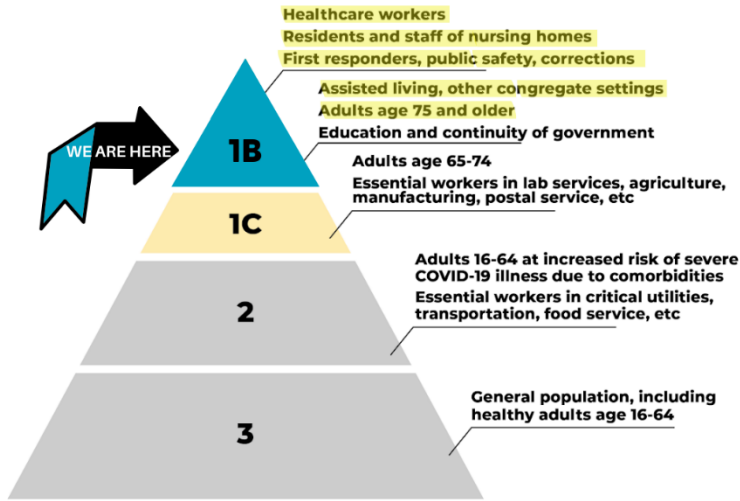


COVID-19 Vaccination Distribution Plan & Process



Who is included in the pyramid groups?

1A – Healthcare workers, Nursing home residents & staff, First responders, public safety, corrections, front line judiciary staff. (This phase is ongoing.)

1B – Those age 75+, those in assisted living, independent living, developmental disabilities/behavioral health group homes and other congregate facilities; high-risk incarcerated individuals, continuity of government, and education, including K-12 teachers, support staff, and child care providers. (Howard county will begin by prioritizing Howard County residents age 75 and older)

1C – Those ages 65-74, and workers in other critical sectors, including grocery stores, public transit, food/agriculture production, lab services, and manufacturing.

2 – Those ages 16-64 at increased risk of severe COVID-19 illness due to comorbidities, essential workers in critical utilities, transportation, logistics, infrastructure, food service, etc., and incarcerated individuals.

3 – General population age 16 and older. All Marylanders are expected to have access to the vaccine.

COVID-19 Vaccine Availability

- Howard County Health Department is currently in Phase 1B of vaccination.
- As more doses become available, HCHD will continue to distribute based on a tiered structure.
- Registration on MarylandVax.org is required in order to get the vaccine. Pre-registration is not available.
- HCHD will send out more information to ensure those eligible to receive vaccine know how to register and where to receive it.
- Stay informed by signing up to get HCHD email updates, following us on social media or visiting our COVID vaccine page at bit.ly/HoCOVIDVaccine.
- Vaccine supply will determine movement through the different phases.