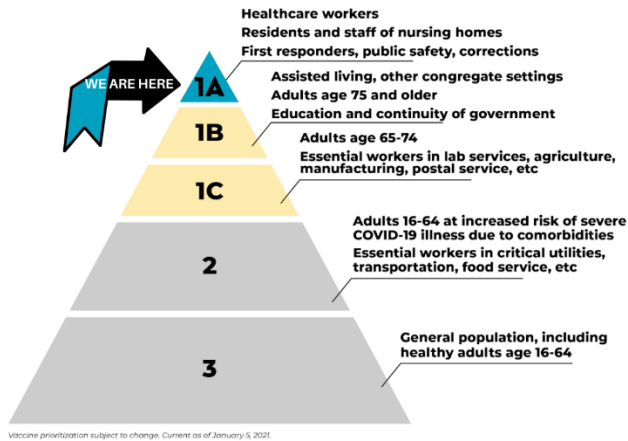


COVID-19 Vaccination Distribution Plan & Process



Who is included in the pyramid groups?

StayCOVIDSafe



1A – Healthcare workers, Nursing home residents & staff, First responders. includes those groups at highest risk of exposure to or developing complications from COVID-19. (This phase is ongoing.)

1B – Those age 75 and older, special needs group homes, high-risk inmates, developmentally disabled populations, continuity of government vaccinations, as well as teachers, child care, and education staff. (The state estimates this phase to begin in late January)

1C – Those ages 65-74, and workers in other critical sectors, including grocery stores, public transit, agriculture production, and manufacturing. (The state estimates this phase to begin in early March)

2 – People in critical, essential infrastructure roles, People at moderately higher risk of severe COVID-19 illness.

3 – General population aged 16 and older. All Marylanders are expected to have access to the vaccine.

COVID-19 Vaccine Availability

- Howard County Health Department is currently in Phase 1A of vaccination.
- As more doses become available, HCHD will continue to distribute based on a tiered structure*.
- Registration on MarylandVax.org is required in order to get the vaccine. Pre-registration is not available.
- HCHD will send out more information to ensure those eligible to receive vaccine know how to register and where to receive it.
- Stay informed by signing up to get HCHD email updates, following us on social media or visiting our COVID vaccine page at bit.ly/HoCOVIDVaccine.
- Vaccine supply will determine movement through the different phases.