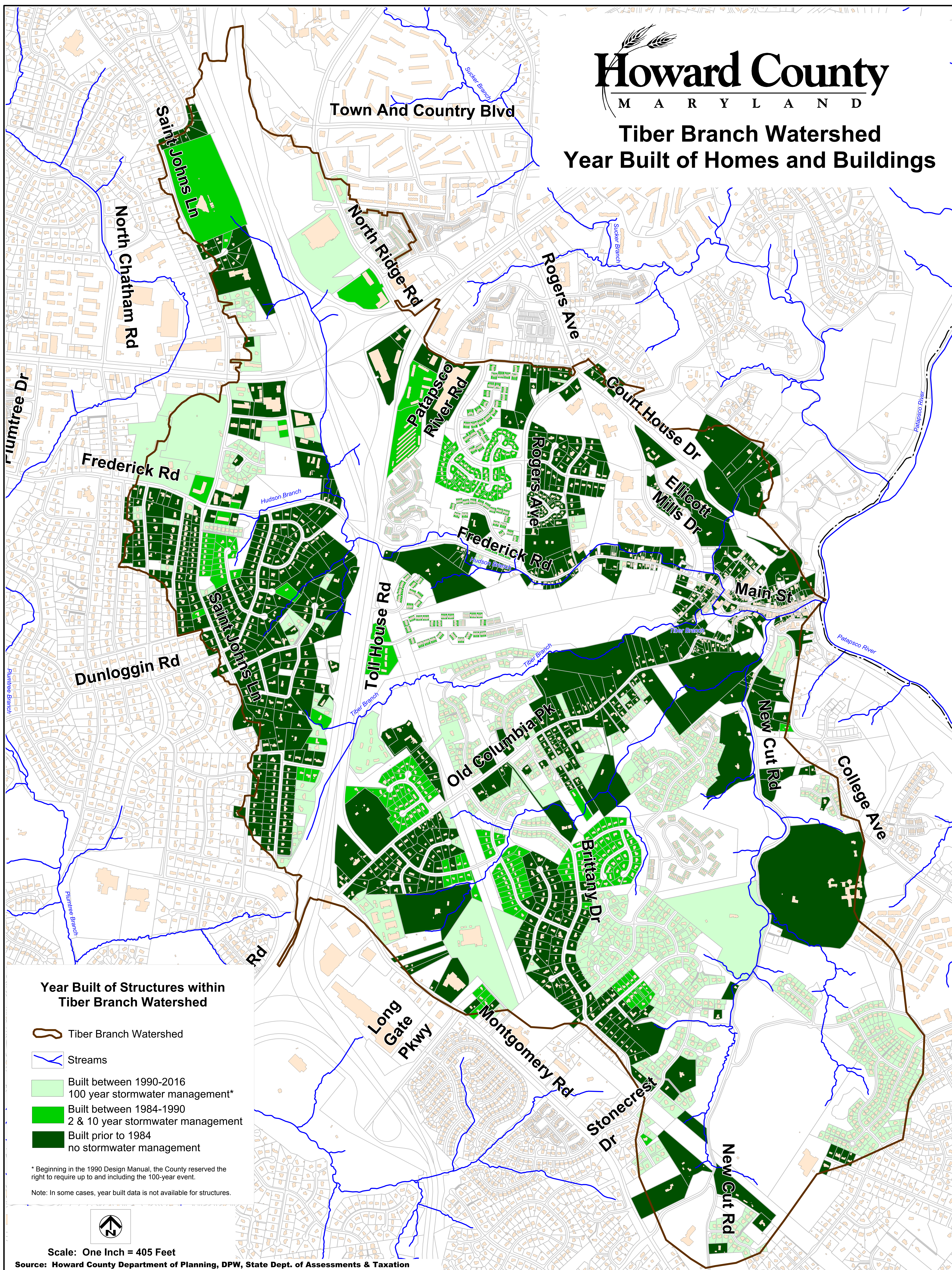


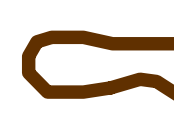
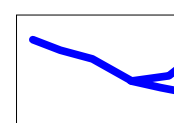



Howard County

M A R Y L A N D

Tiber Branch Watershed Year Built of Homes and Buildings



Year Built of Structures within Tiber Branch Watershed

-  Tiber Branch Watershed
-  Streams
-  Built between 1990-2016
100 year stormwater management*
-  Built between 1984-1990
2 & 10 year stormwater management
-  Built prior to 1984
no stormwater management

* Beginning in the 1990 Design Manual, the County reserved the right to require up to and including the 100-year event.

Note: In some cases, year built data is not available for structures.



Scale: One Inch = 405 Feet

Source: Howard County Department of Planning, DPW, State Dept. of Assessments & Taxation

G:\MIF_Dpzl_Projects\Research\SpecialRequest\WatershedStudy\TiberBranchWatershed.YearBuilt.SWM