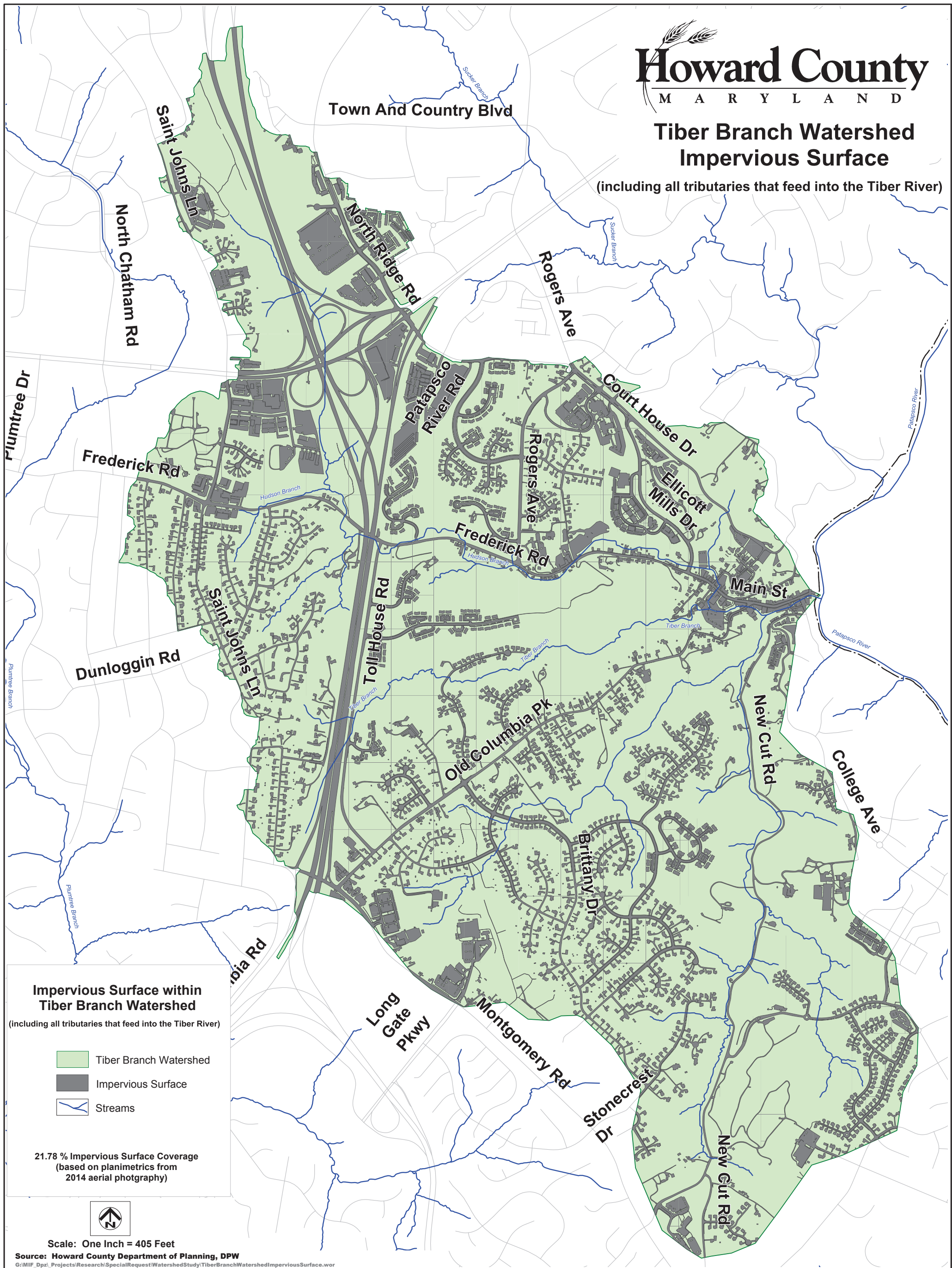


**Tiber Branch Watershed  
Impervious Surface**

(including all tributaries that feed into the Tiber River)



**Impervious Surface within  
Tiber Branch Watershed**  
(including all tributaries that feed into the Tiber River)

- Tiber Branch Watershed
- Impervious Surface
- Streams

21.78 % Impervious Surface Coverage  
(based on planimetrics from  
2014 aerial photography)



Scale: One Inch = 405 Feet

Source: Howard County Department of Planning, DPW

G:\MIF\_Dpzi\_Projects\Research\SpecialRequest\WatershedStudy\TiberBranchWatershedImperviousSurface.wor