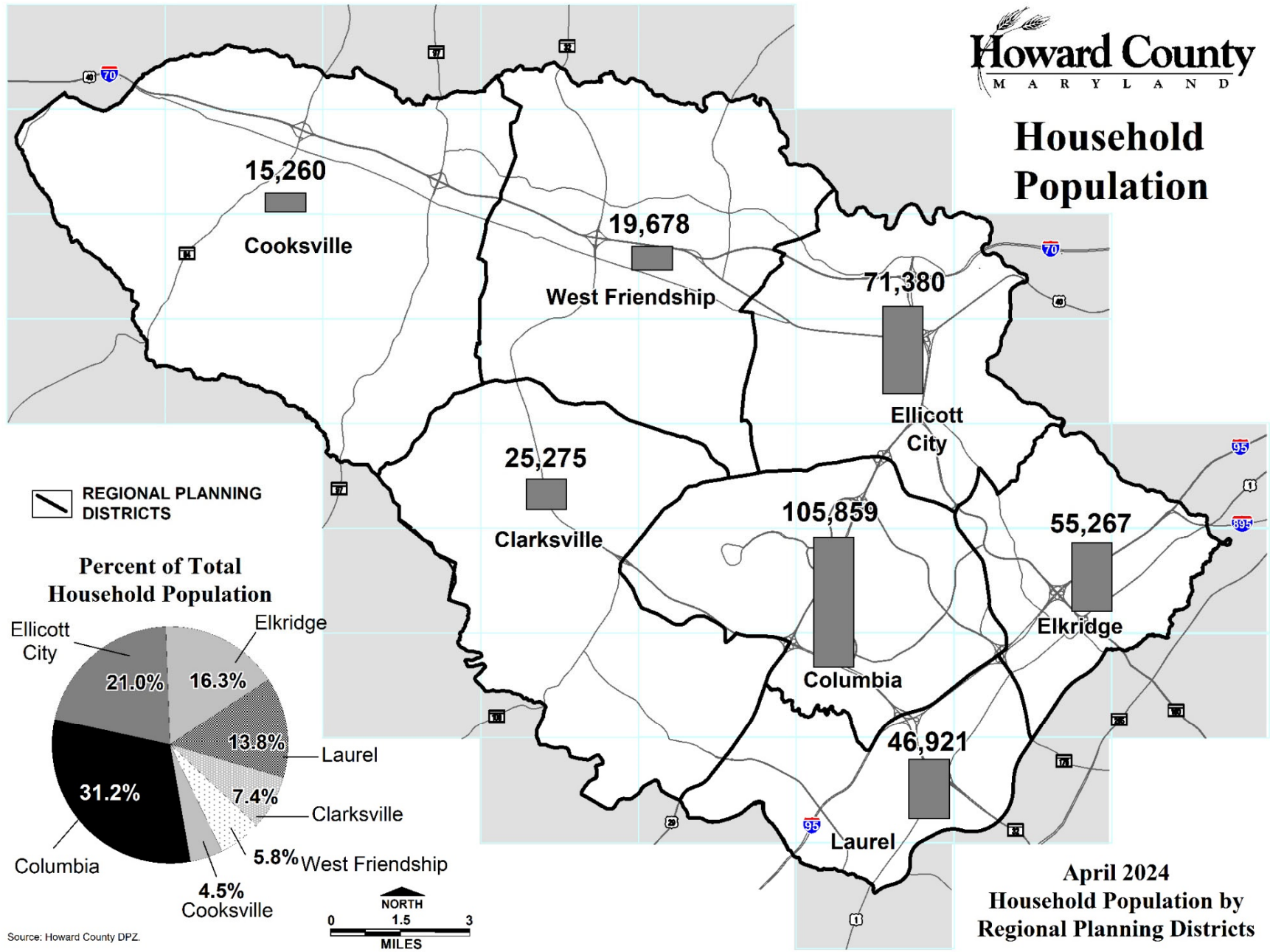


Howard County Residential Construction & Population Report



Household Population



April 2024
Household Population by
Regional Planning Districts

**HOWARD COUNTY, POPULATION
CUMULATIVE POPULATION AS OF DATE SHOWN (1st OF MONTH)**

Household Population	Monthly 2024											
	Jan.	Feb.	March	April	May	June	July	Aug.	Sept.	Oct.	Nov.	Dec.
Elkridge	54,828	55,261	55,264	55,267								
Ellicott City	71,292	71,318	71,340	71,380								
West Friendship	19,560	19,586	19,663	19,678								
Cooksville	15,251	15,251	15,257	15,260								
Clarksville	25,242	25,245	25,248	25,275								
Columbia	105,543	105,543	105,670	105,859								
Laurel	46,797	46,829	46,895	46,921								
Total Household Population	338,511	339,032	339,337	339,641								
Group Quarter Population	3,077	3,077	3,077	3,077								
Total Population	341,588	342,109	342,414	342,718								

VACANCY RATE

SFD = 2%
SFA = 3%
APT = 4%
MH = 3%

HOUSEHOLD SIZE

SFD = 3.2166
SFA = 2.6788
APT = 2.0870
MH = 3.1982
Age Restricted = 1.7000

NOTES

Household size estimates are based on results from ACS sample dataset and 2020 Census, except for age-restricted which is based on DPZ estimate. Matches household sizes used in Round 10. Population estimated based on new unit growth times household size and vacancy rate factors.

**Prepared by
Department of Planning & Zoning
Division of Research
3430 Court House Drive
Ellicott City, Maryland 21043
(410) 313-2350**

