

# Riverfront

## Guidelines

1. Design the tunnel outfall to seamlessly blend with its surroundings.
2. Design the tunnel outfall to minimize risks to people.
3. Enhance views to the Patapsco River and the B&O Railroad Museum for the visitor's gateway experience into Ellicott City.
4. Provide safe and inviting pedestrian and bicycle access between Baltimore County and Ellicott City.
5. If building new pedestrian and bicycle bridge across the river, make it an attraction with a signature design that best reflects its context.
6. If building a parking structure in Lot A, allow a direct connection to the Trolley Line #9 Trail.
7. Maximize accessible riverfront park space.
8. Design Parking Lot B as multi-use parking and park space.

# Riverfront



# Riverfront

Potential Deck  
(140-210 spaces, 3-4 L)

Potential Enhanced Riverfront  
Park (Coordination with  
Baltimore County and Oella)

Potential  
bike/ped bridge  
(signature design)

Construction  
access

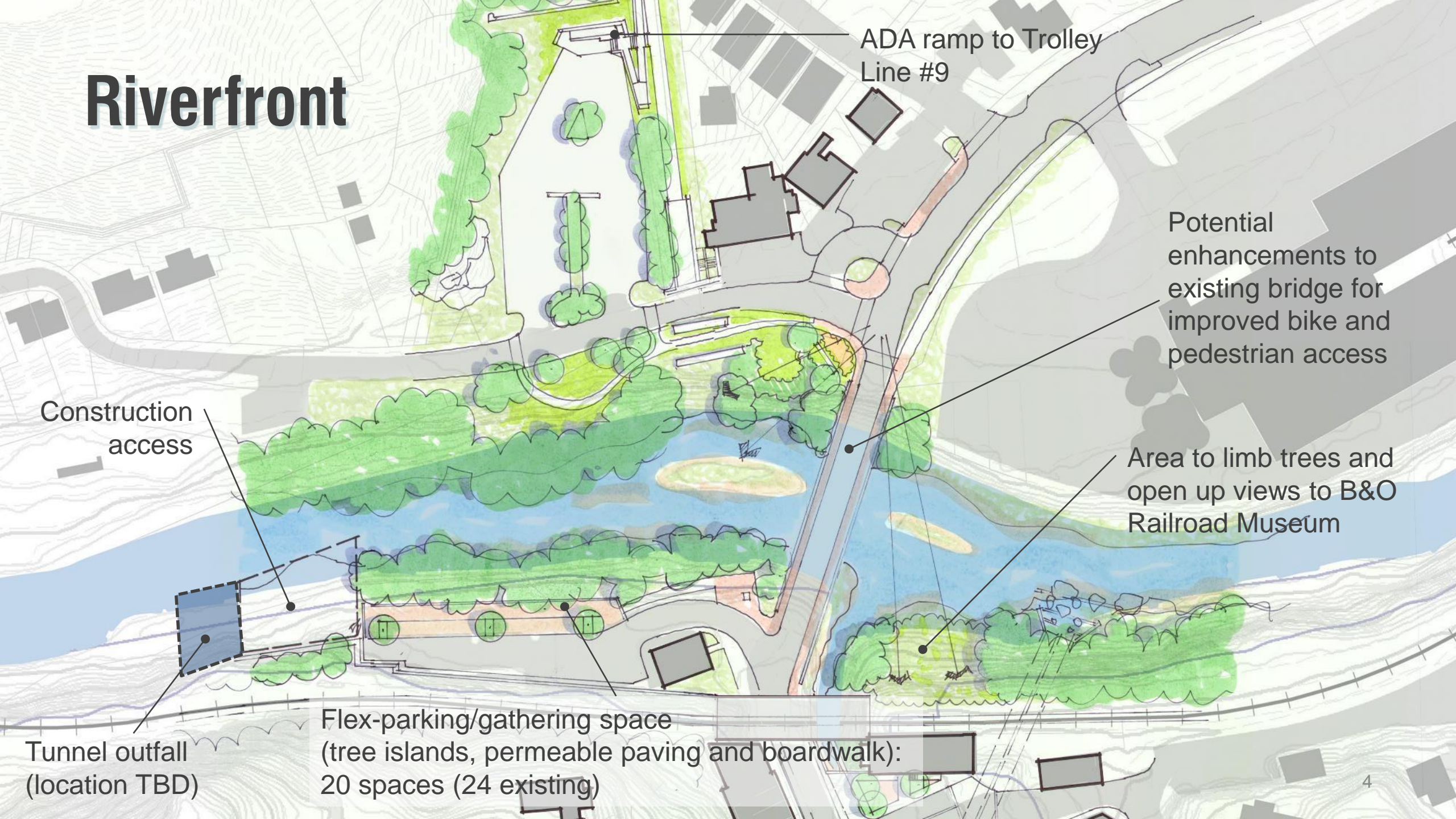
Tunnel outfall  
(location TBD)

Potential Riverfront Park  
(permeable paving and boardwalk)

Potential tree limbing  
to open views to river

Area to limb trees and  
open up views to B&O  
Railroad Museum

# Riverfront



ADA ramp to Trolley  
Line #9

Potential  
enhancements to  
existing bridge for  
improved bike and  
pedestrian access

Area to limb trees and  
open up views to B&O  
Railroad Museum

Construction  
access

Tunnel outfall  
(location TBD)

Flex-parking/gathering space  
(tree islands, permeable paving and boardwalk):  
20 spaces (24 existing)

# Riverfront

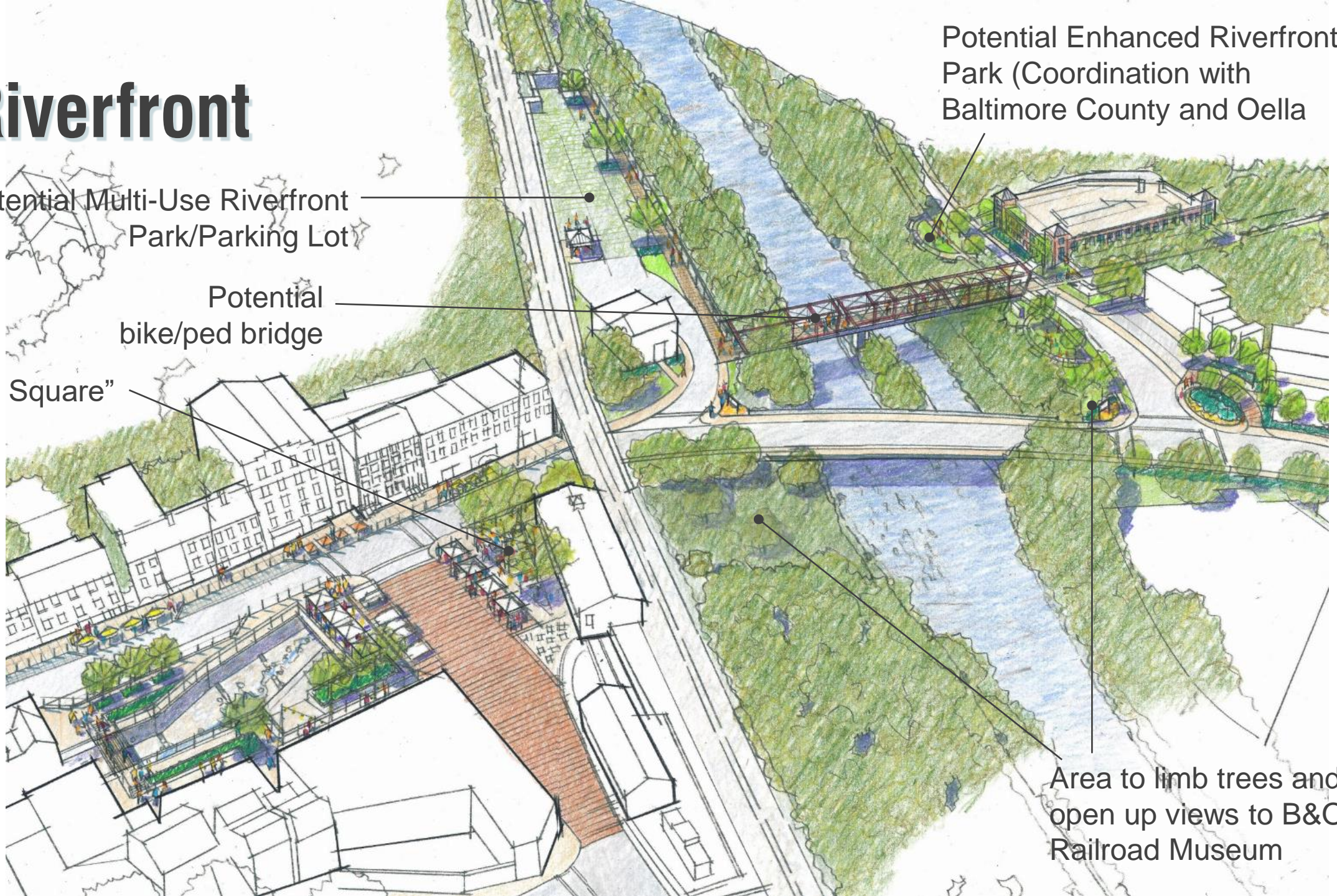
Potential Multi-Use Riverfront  
Park/Parking Lot

Potential  
bike/ped bridge

“B&O Square”

Potential Enhanced Riverfront  
Park (Coordination with  
Baltimore County and Oella)

Area to limb trees and  
open up views to B&O  
Railroad Museum



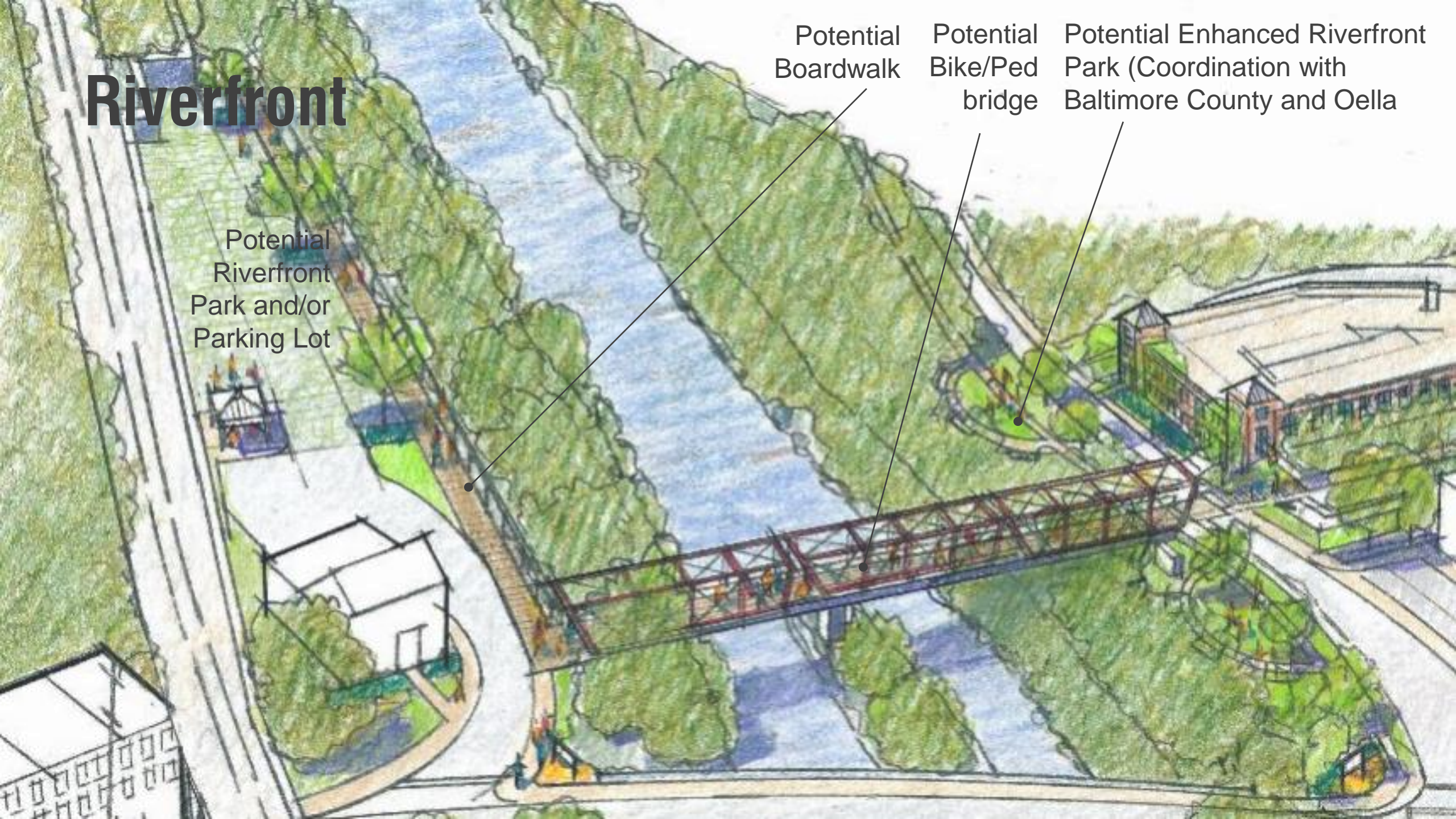
# Riverfront

Potential  
Riverfront  
Park and/or  
Parking Lot

Potential  
Boardwalk

Potential  
Bike/Ped  
bridge

Potential Enhanced Riverfront  
Park (Coordination with  
Baltimore County and Oella)



# Riverfront

