





Streetscape

Guidelines

1. Design streets, sidewalks and associated pedestrian areas to be simple, consistent and authentic.
2. Use flood resilient materials and construction methods.
3. Integrate visible and audible emergency alert systems into the design of streetscapes.
4. Consider potential impacts from storm debris in the design of streets, sidewalks and associated pedestrian areas.

Streetscape (Long-Term)

Potential
Traffic Circle





-  New Sidewalks
-  On-Street Parking/Drop-Off/
Delivery
-  Crosswalks
-  New Curb Bump-Outs

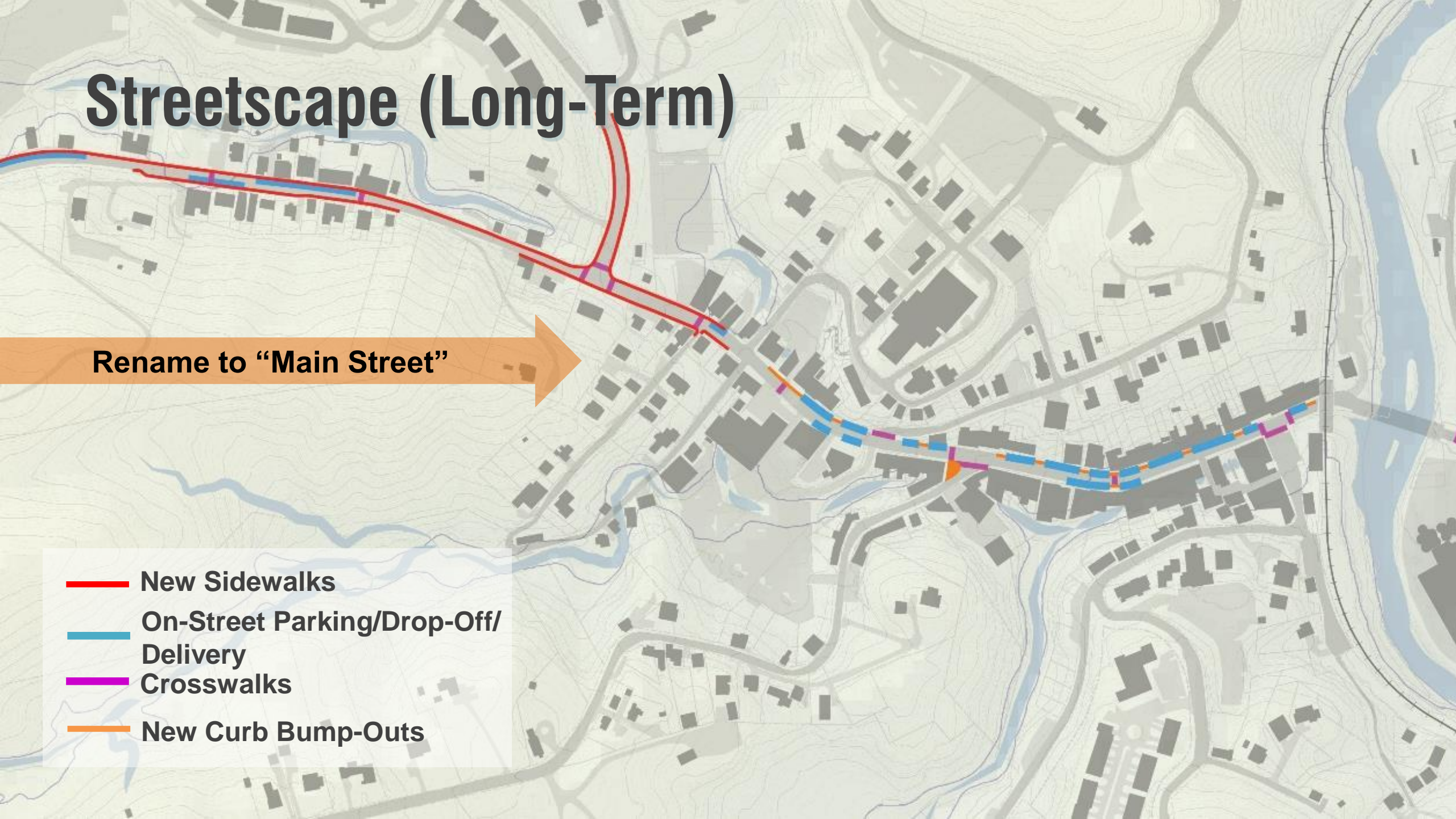
 Rename to "Main Street"

 **WEST END MAIN**

Streetscape (Long-Term)

Rename to "Main Street" 

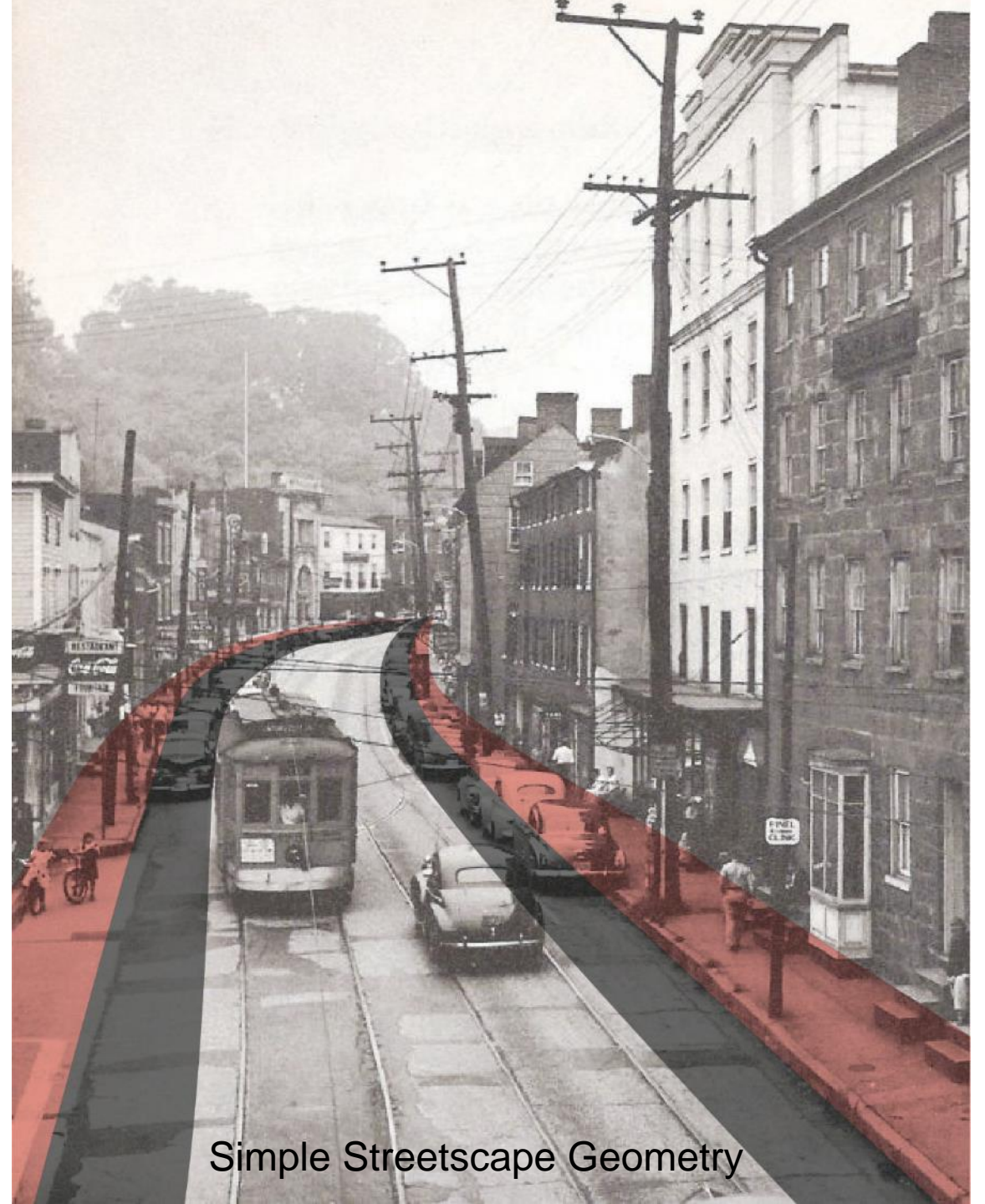
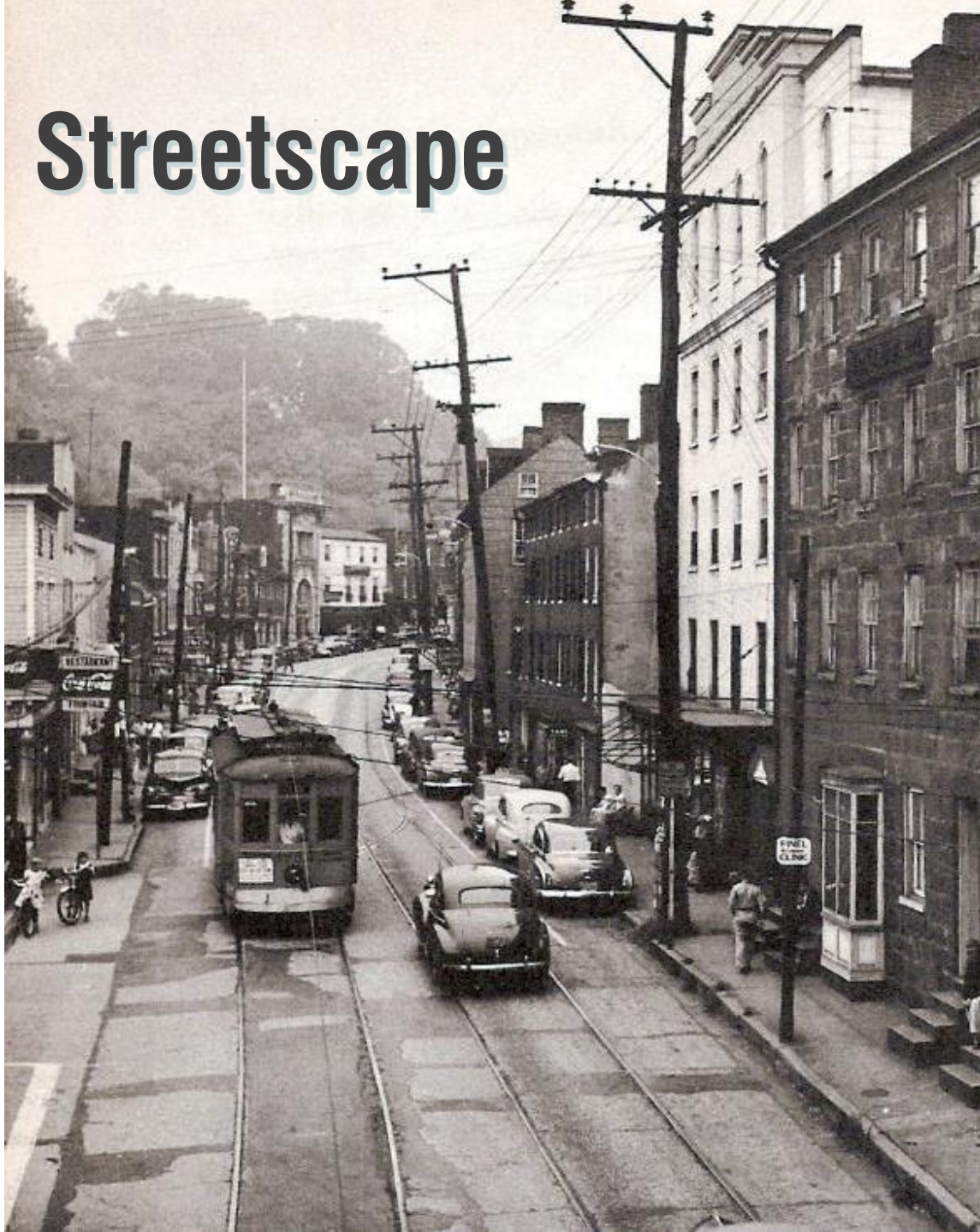
-  New Sidewalks
-  On-Street Parking/Drop-Off/
Delivery
-  Crosswalks
-  New Curb Bump-Outs



Streetscape



Streetscape



Simple Streetscape Geometry

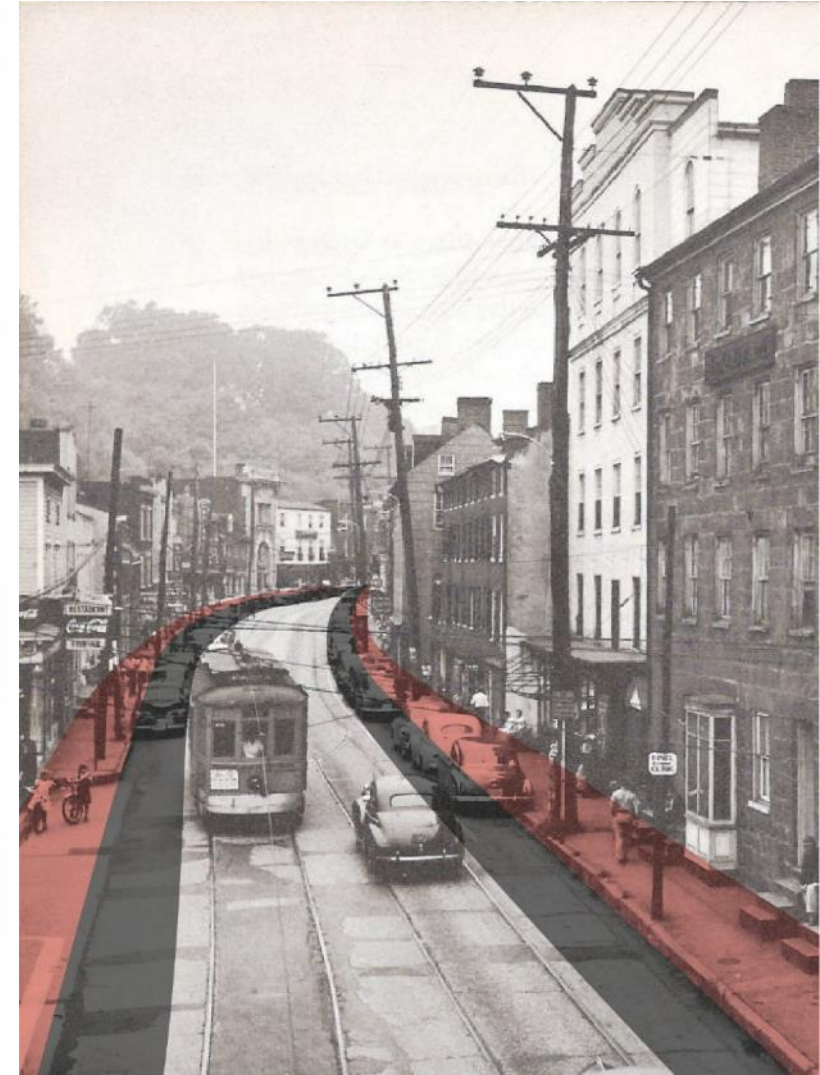
Streetscape



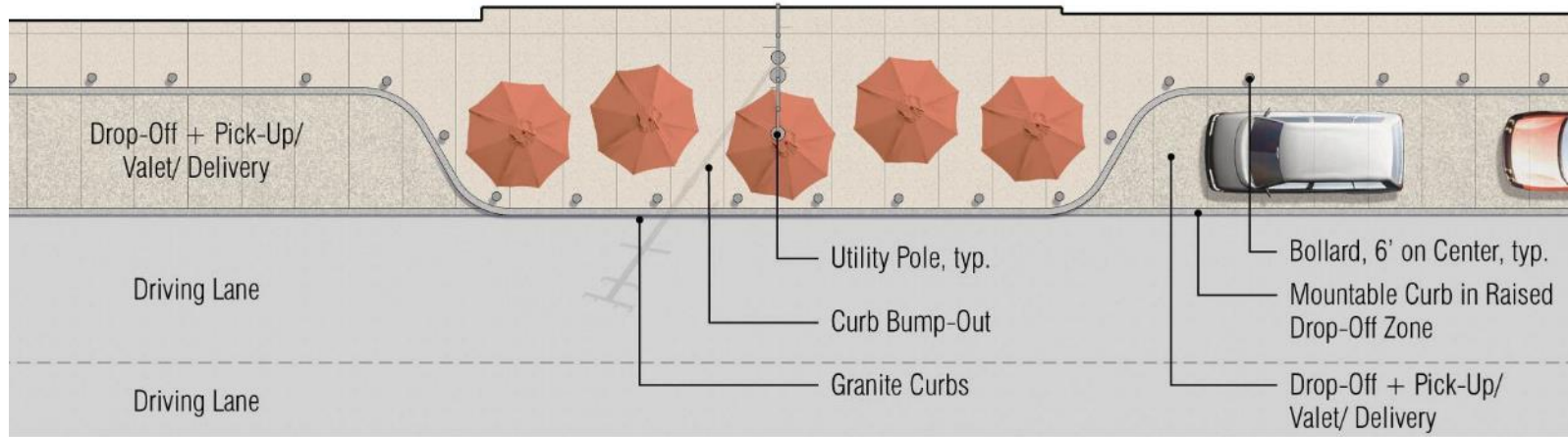
Material Treatment (Option 1)



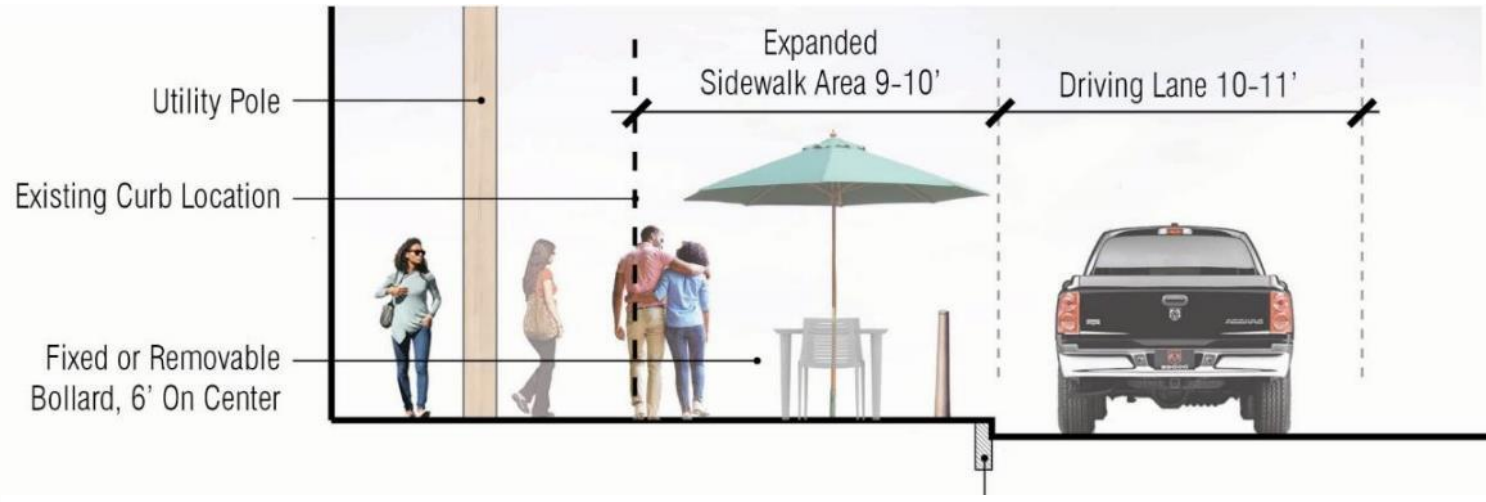
Material Treatment (Option 2)



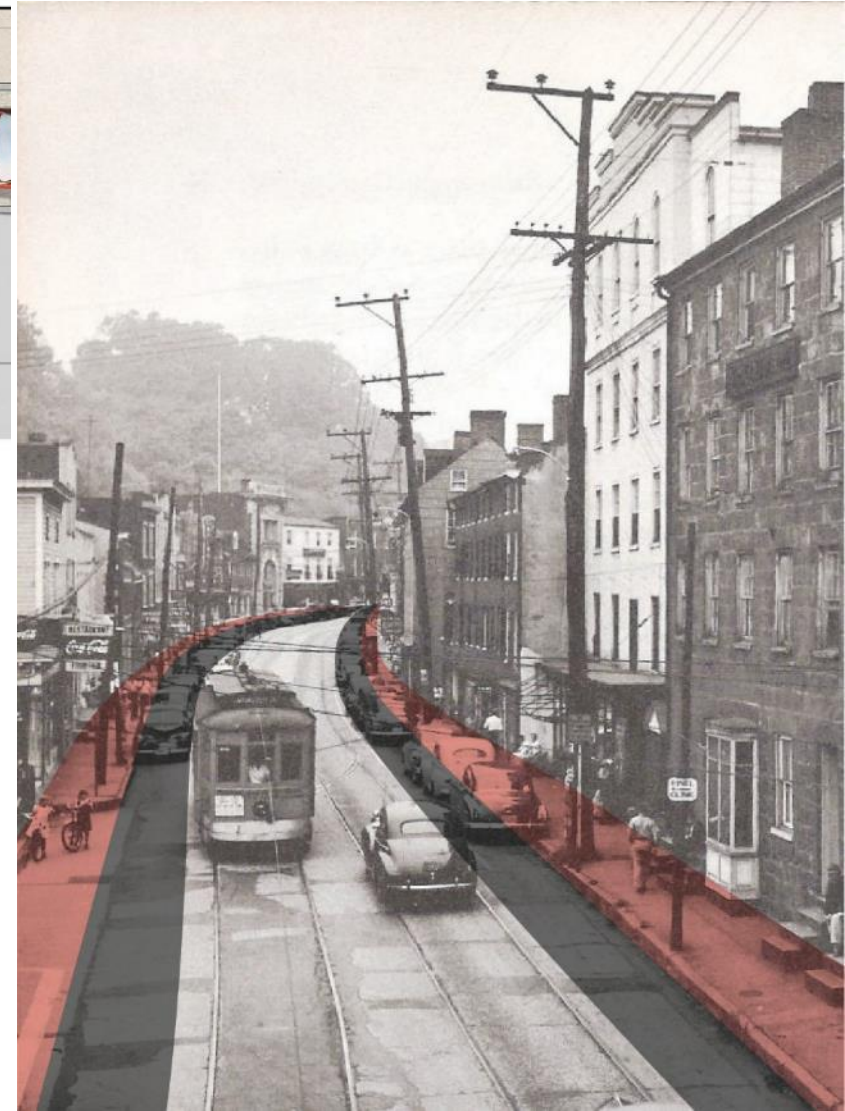
Streetscape



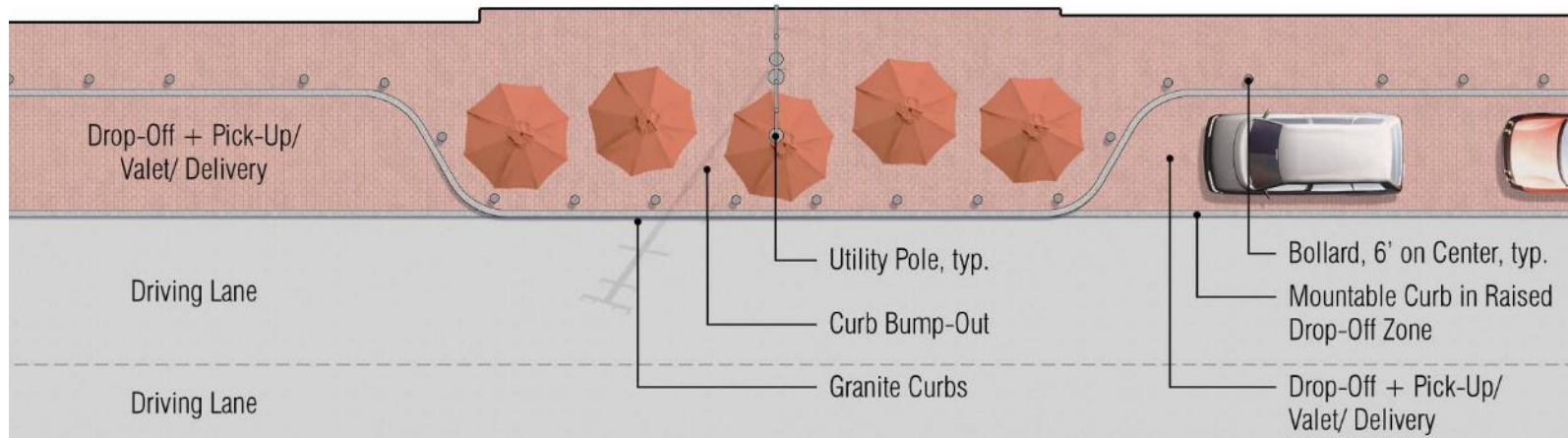
Implementation BEFORE Safe and Sound Flood Mitigation



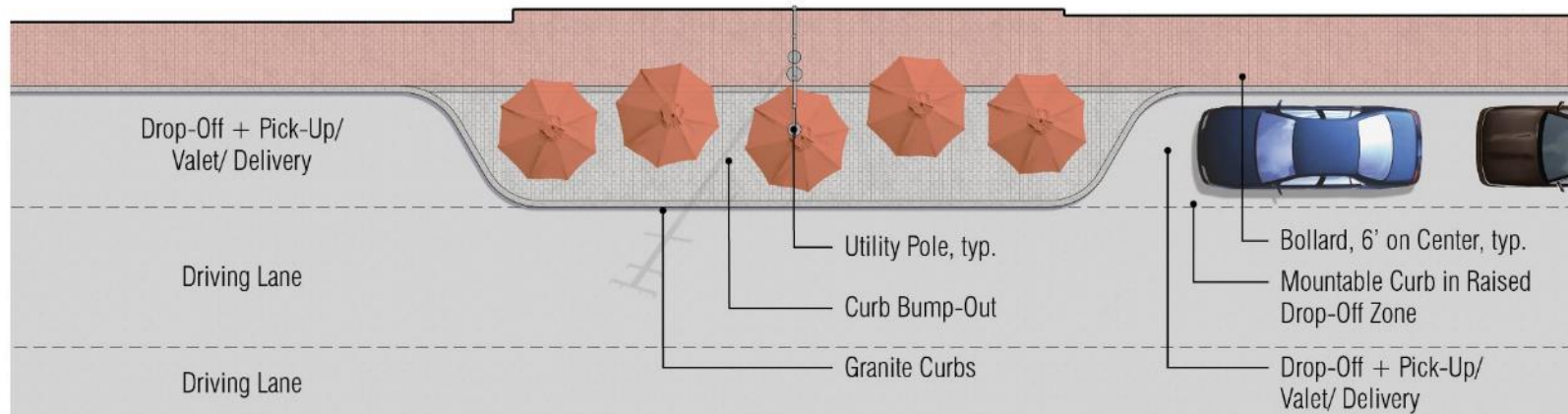
Expanded North Side Sidewalk at Extended "Bumpouts"



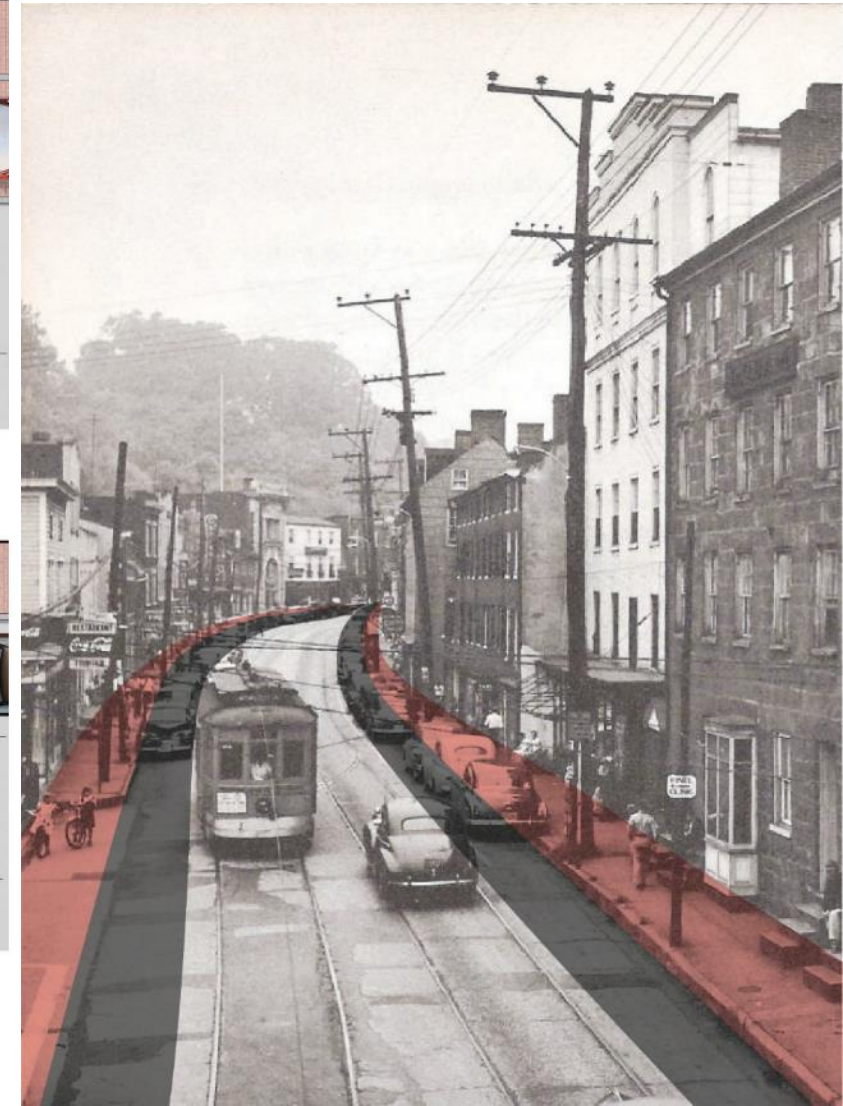
Streetscape



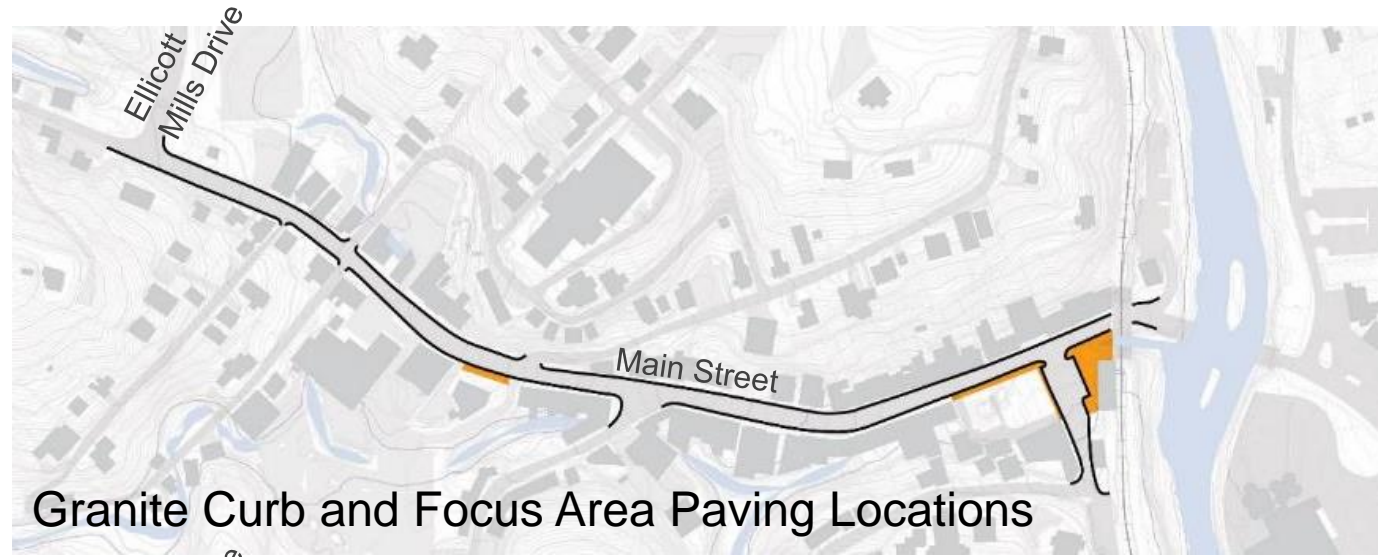
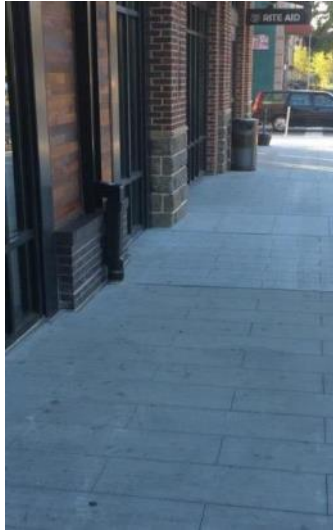
Implementation AFTER Safe and Sound Flood Mitigation



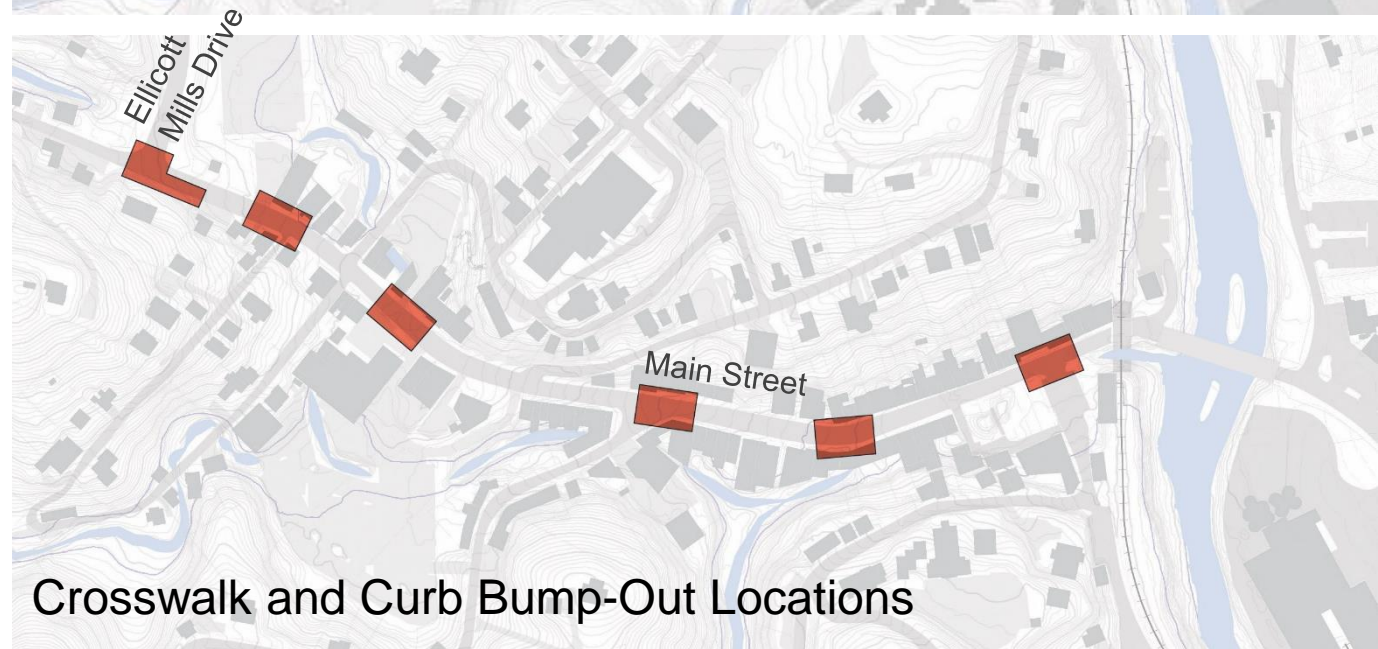
Implementation AFTER Safe and Sound Flood Mitigation (Alternate)



Streetscape



Granite Curb and Focus Area Paving Locations

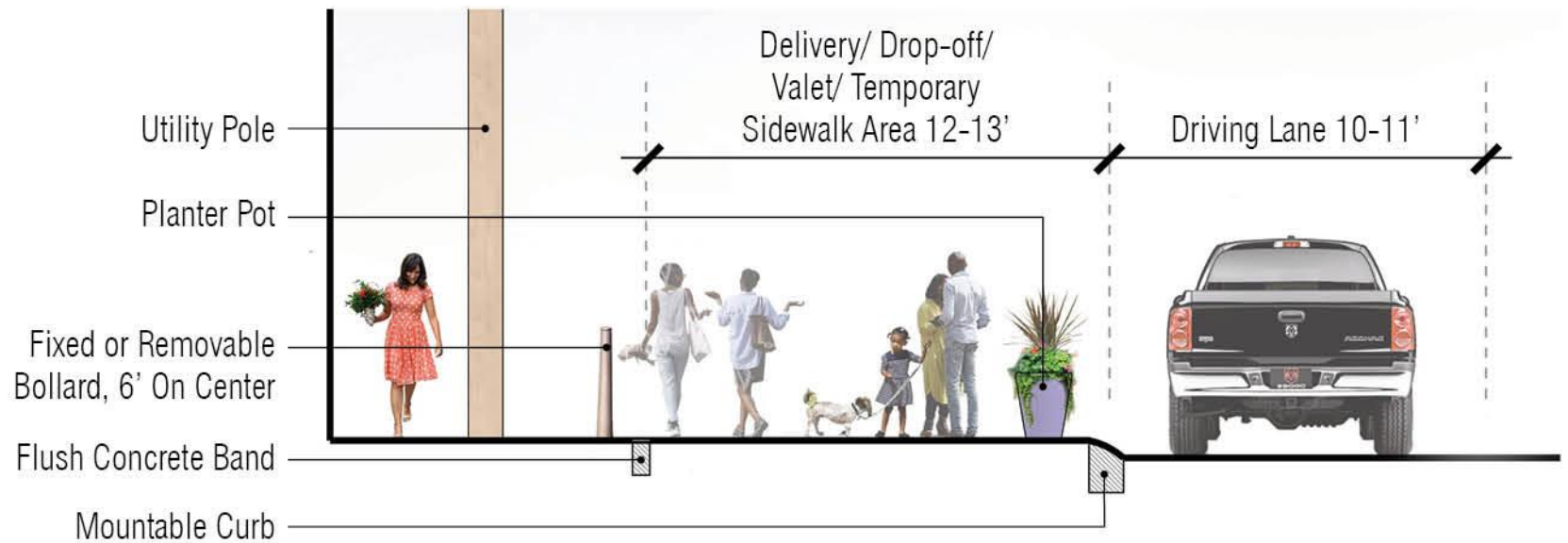
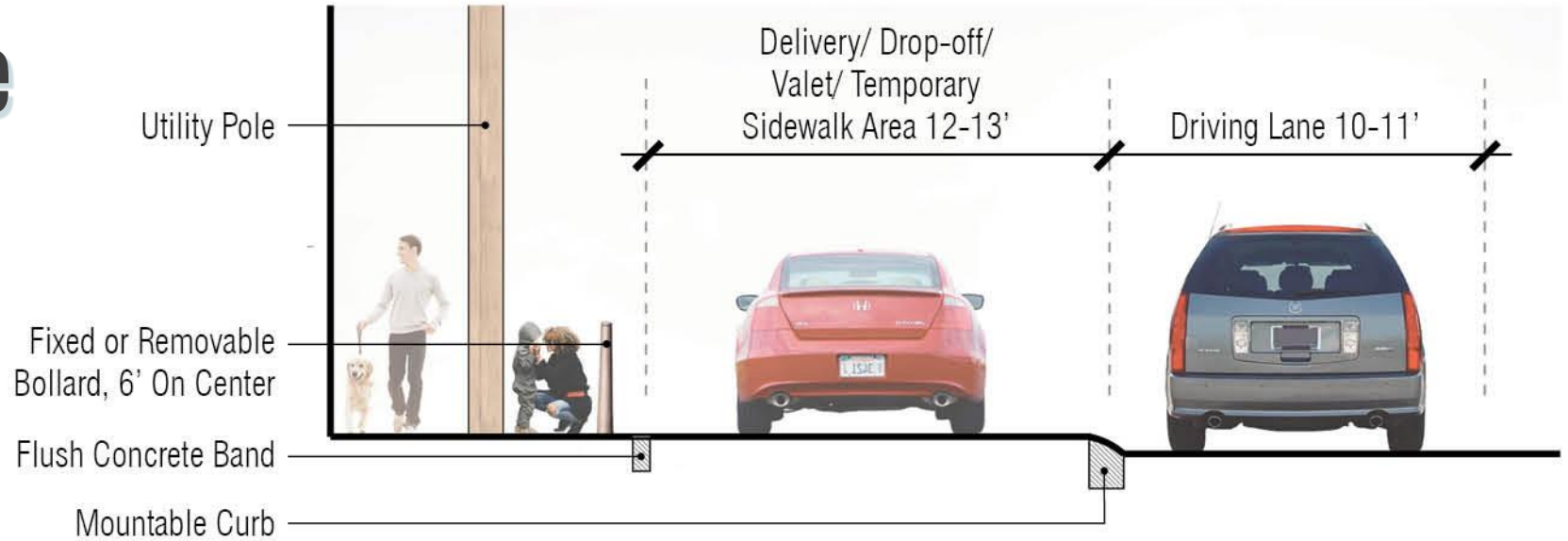


Crosswalk and Curb Bump-Out Locations

Streetscape

Potential Lower Main Street Mountable Curb

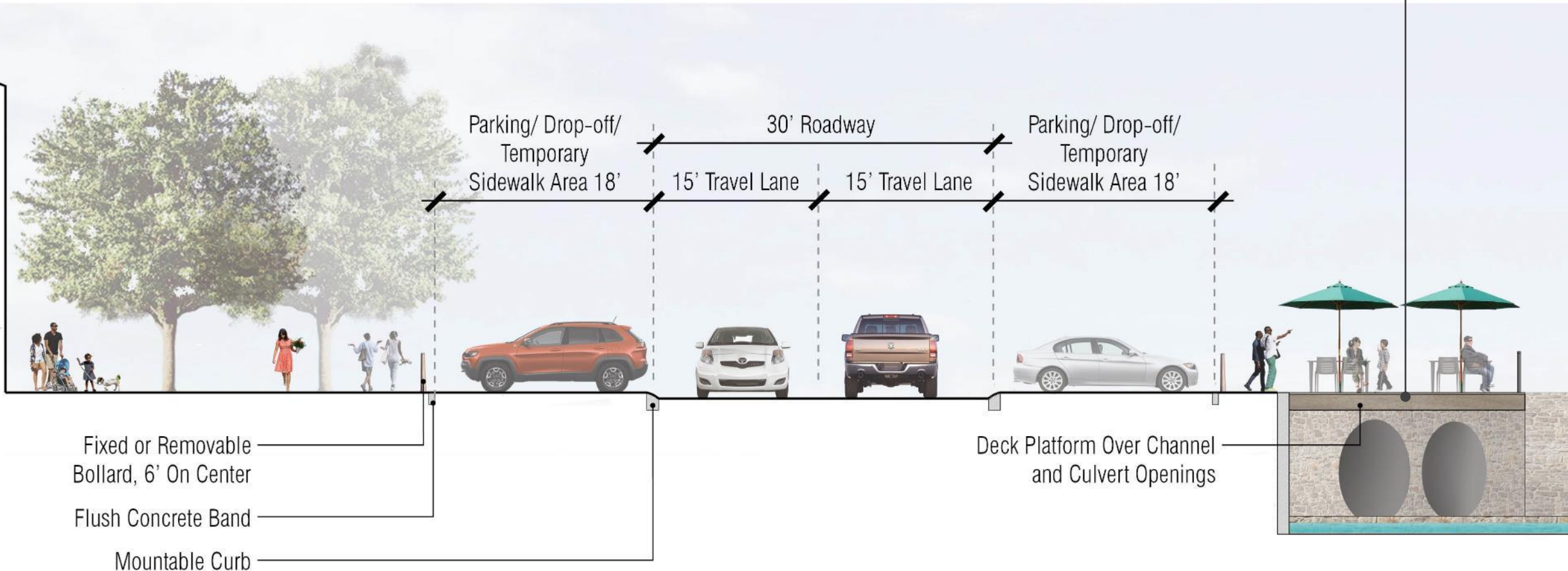
(Assume 3' lane shift to the south)



Streetscape

Maryland Avenue Typical Day

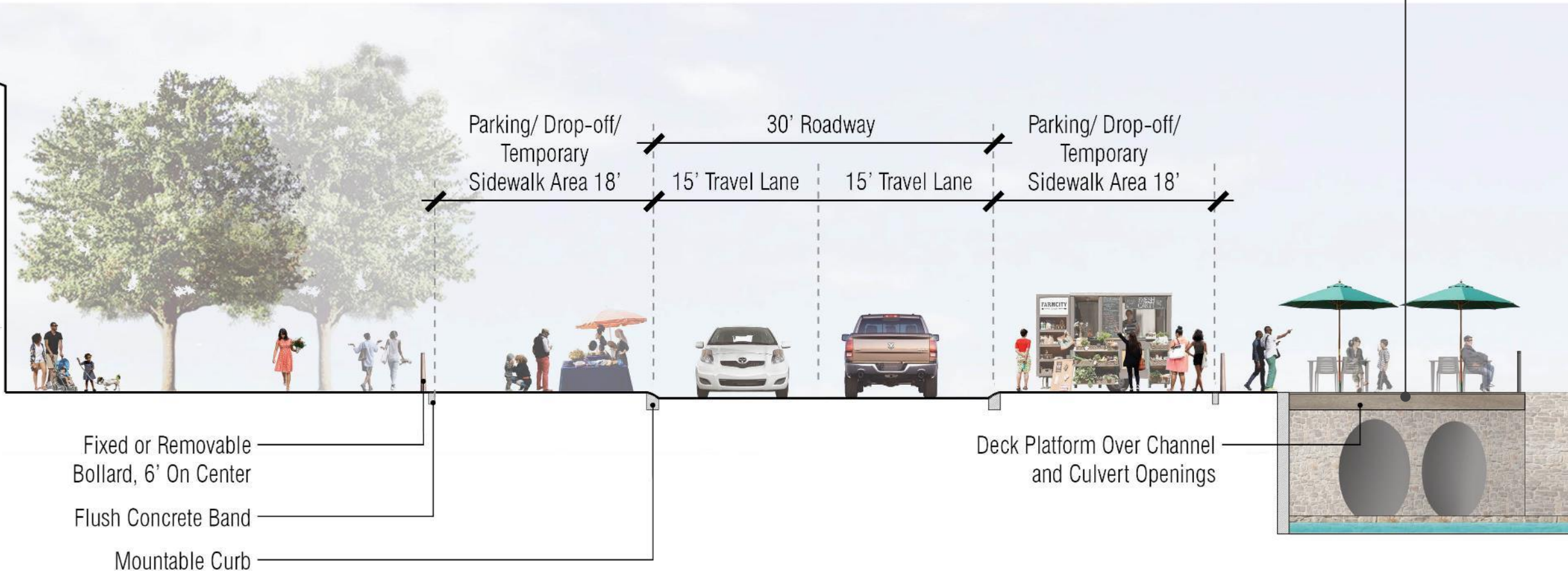
Opportunity to explore
as culvert design is
being developed



Streetscape

Maryland Avenue Event

Opportunity to explore
as culvert design is
being developed



Streetscape

