

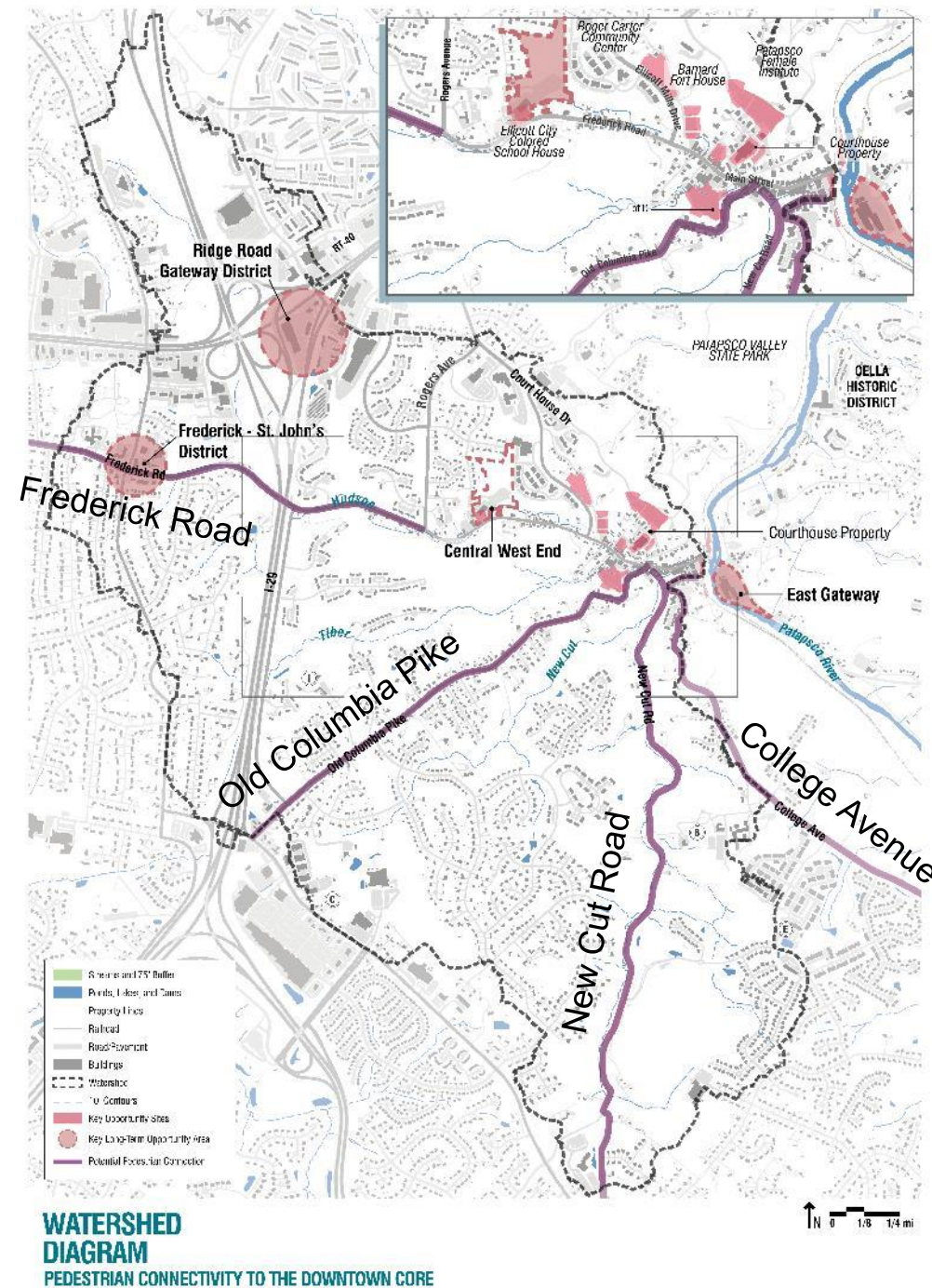
# 3. Transportation and Parking

---

## Transportation Guidelines

1. Support alternative ways of getting around (walking, bicycling, shuttle, and regional transit) through the transportation network.
2. Make the experiences of a pedestrian more enjoyable than currently exist.
3. Make sidewalks and paths more accessible, to more people.
4. Link nearby neighborhoods to downtown with new pedestrian and bicycle paths.
5. When designing streetscape improvements, enhance visual and physical access to high ground.

# Transportation



# 3. Transportation and Parking

---

## **Parking Network Guidelines**

1. Be comprehensive in the overall parking strategy for Ellicott City and consider the alternative ways people get around.
2. In the near-term, restrict on-street parking where flood risk is greatest.
3. If on-street parking is restricted, accommodate short-term needs (drop-off, loading, and deliveries).
4. Over time, locate most off-street parking out of flood-prone areas.
5. While the location of parking may change over time, plan for overall parking supply to meet typical demand.
6. When new parking is being planned to meet supply, balance the number of spaces against other site opportunities and the surrounding character.

# Parking Network

## EXISTING PARKING

Lot A = 76

Lot B = 24

Lot C = 31

Lot D = 238

Lot E = 28

Lot F = 95

Lot G = 47 (Temporary)

On-Street = 85

Courthouse = 275

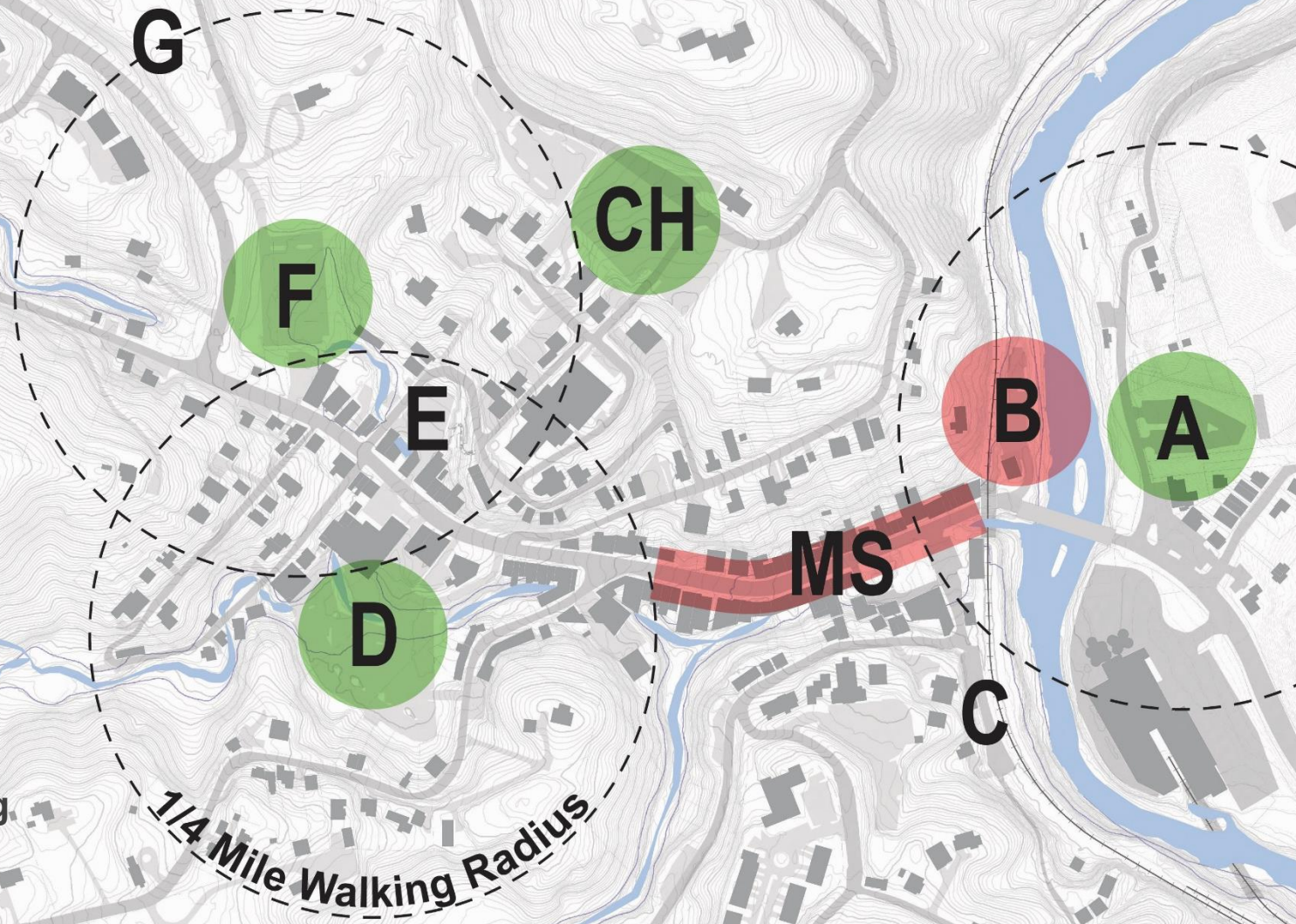
**TOTAL = 852 spaces (899)**



Best Opportunities to Increase Parking.



Potential Areas for Reduced Parking



# Parking Network



Short-Term to Long-Term Transition



Valet

"Branded" Shuttle System

# Parking Network



Wayfinding



1'-0"  
SCALE

