

Fiscal 2017 Operating Budget Detail Backup

Soil Conservation District Department Narrative

Department Description :

The Howard Soil Conservation District (HSCD) is a unique partnership of state, federal and local entities, focused on the improvement and conservation of the county's natural resources. As a separate political subdivision, the District currently operates under an MOU with the County that sets forth the mutual rights and responsibilities of the District and the County. Staff consists of Certified Professional Erosion and Sediment Control Specialists, Registered Professional Engineers, Certified Professional Agronomists, Equine Specialists and Wetlands Specialists. The District has access to federal and state specialists on an as-needed basis.

The District has a major role in implementing the Chesapeake Bay Total Maximum Daily Load (TMDL) imposed by the EPA. This role entails working with the Urban and Agricultural sectors to ensure compliance with State and federal regulations regarding pollution leaving the site. HSCD provides the only interface between the two targeted sectors at the local level. HSCD will function as the coordinator for Nutrient Credit Trading between the urban and agricultural sectors. A major project was launched in 2012 to inventory all Agricultural Preservation farms to determine if they meet the TMDL baseline, and if not, what changes are necessary to meet the baseline. This project also determines if there are additional credits that can be generated above the baseline.

HSCD reviews and approves all earth disturbances for compliance with sediment control and small pond safety as required by State laws. HSCD has a major role in evaluating concept plans and Environmental Site designs for new developments. In addition, HSCD provides advisory services to County agencies, engineers and the general public with regard to sedimentation and drainage issues.

HSCD has established enhanced agricultural management initiatives by working in conjunction with the WSSC in a cost-share program that targets smaller landowners that are not eligible for federal or State incentive programs. HSCD has been recognized by the EPA as a Clean Water Partner for the 21st Century. To complement the outreach to the small landowners, educational programs for horse hobbyists are offered. Pasture Management seminars are conducted to address issues such as conservation on horse farms, fertilizing pastures and other best management topics.

HSCD has initiated a major effort in conjunction with the Howard County Agland Preservation Program, to assure compliances with the conservation plan provisions in the easement. This assures quality natural resource protection for future generations. A major effort targeting livestock owners within the watershed of the Triadelphia Reservoir has been launched. This will result in improved water quality in the reservoir.

HSCD provides access to cost-sharing assistance for installation of agricultural best management practices for local landowners. Technical Assistance is also provided through memorandums of understanding with a host of State and federal agencies.

HSCD successfully administers the Envirothon, an on-going environmental education program which functions in partnership with Howard County's middle and high school educators, specifically, the science instructors and students.

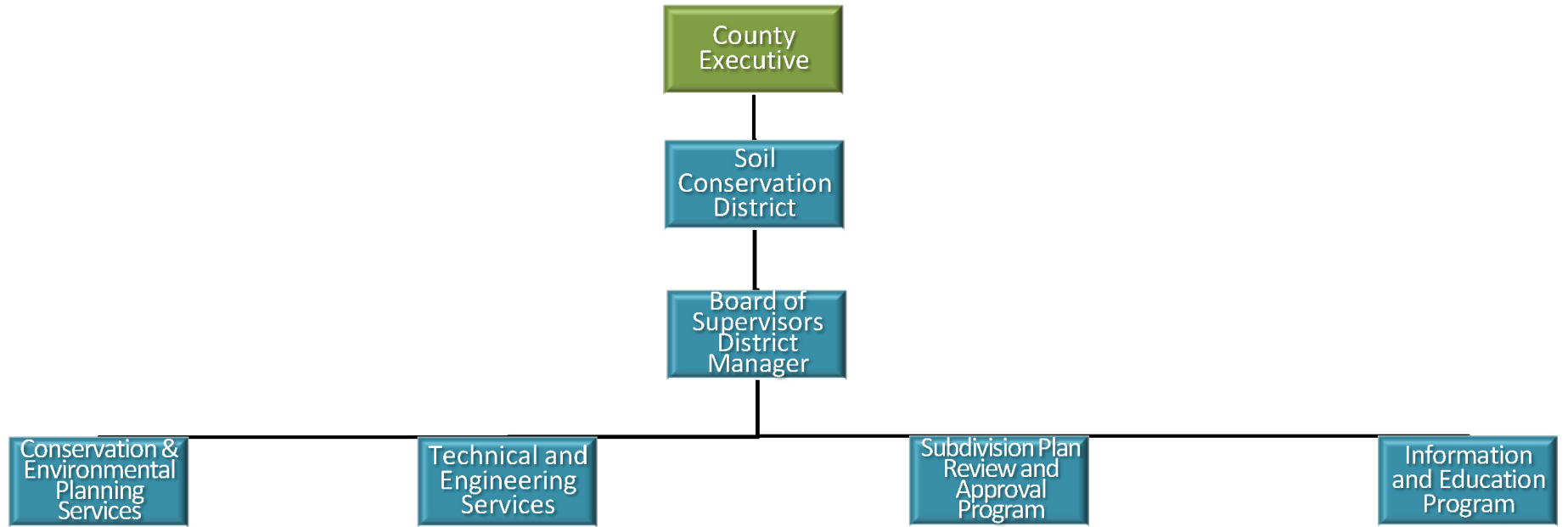
HSCD is partnering with the Columbia Association (CA) in an effort to reduce phosphorus fertilizer used within Columbia. This is on both CA controlled land as well as private yards. Assistance is also being provided in the design and installation of wetland filters on CA land to improve nutrient and achieve TMDL Goals for nutrient reductions to the Patuxent River.

Outlook : (What is new or different about this years budget?)

This is a continuation budget

Fiscal 2017 Operating Budget Detail Backup

Soil Conservation District Department Organizational Chart



Fiscal 2017 Operating Budget Detail Backup

Soil Conservation District Department Personnel Summary

Classification	Grade	FY 2016 Authorized	FY 2017 Proposed
SBFS Total			

Fiscal 2017 Operating Budget Detail Backup

Soil Conservation District Department Expenditure Detail

01 - General Fund

	FY 2015 Actual	FY 2016 Approved	FY 2016 Estimate	FY 2017 Proposed	\$ Change	% Change
7800000000 - Soil Conservation District						
50 - Personnel Costs Total	114,731	108,142	108,142	125,990	17,848	16.50%
51 - Contractual Services Total	542,756	688,206	688,197	728,731	40,525	5.89%
58 - Expense Other Total	13,550	12,167	12,167	7,701	-4,466	-36.71%
7800000000 - Soil Conservation District Total	671,037	808,515	808,506	862,422	53,907	6.67%
01 - General Fund Total	671,037	808,515	808,506	862,422	53,907	6.67%

Fiscal 2017 Operating Budget Detail Backup

Soil Conservation District Department Expenditure Detail

27 - Watershed Protection & Restoration Fund

	FY 2015 Actual	FY 2016 Approved	FY 2016 Estimate	FY 2017 Proposed	\$ Change	% Change
7800000000 - Soil Conservation District						
50 - Personnel Costs Total	0	0	0	15,106	15,106	N/A
51 - Contractual Services Total	68,363	94,901	94,901	82,293	-12,608	-13.29%
7800000000 - Soil Conservation District Total	68,363	94,901	94,901	97,399	2,498	2.63%
27 - Watershed Protection & Restoration Fund Total	68,363	94,901	94,901	97,399	2,498	2.63%
7800 - Soil Conservation District Total	739,400	903,416	903,407	959,821	56,405	6.24%

Fiscal 2017 Operating Budget Detail Backup

Soil Conservation District Division Detail

Division Narrative : 7800000000 - Soil Conservation District

Fund : General Fund

Narrative :

This is a continuation budget

Fiscal 2017 Operating Budget Detail Backup

Soil Conservation District Division Detail

Division Narrative : 7800000000 - Soil Conservation District

Fund : Watershed Protection & Restoration Fund

Narrative :

The Fiscal 2017 proposed budget continues funding from the Watershed Protection and Restoration Fund for one position to assist in site analysis for stormwater management fees and opportunities for abatement on farms and large lots throughout the county.
