

ASPHALT DRIVEWAY RECONSTRUCTION (HOWARD CO. STD. DETAIL R-6.02)	
SY	STATION/OFFSET
30	STA. 302+61.20' LT. TO STA. 302+84.30' LT.

7 INCH REINFORCED CONCRETE FOR DRIVEWAY (HO. CO. STD. DETAIL R-6.02)	
SY	STATION/OFFSET
21	STA. 302+54.15' LT. TO STA. 302+91.14' LT.

CLEAN EXISTING PIPE	
LF	STATION/OFFSET
90	STA. 104+69.45' LT. TO STA. 104+69.45' RT.
57	STA. 104+69.45' LT. TO STA. 105+27.41' LT.

INSTALL 7 INCH COMBINATION CURB AND GUTTER (HOWARD COUNTY DETAIL R-3.01)	
LF	STATION/OFFSET
114	STA. 104+20.21' RT. TO STA. 302+00.12' RT.
82	STA. 104+36.19' LT. TO STA. 300+39.22' RT.
163	STA. 300+30.16' LT. TO STA. 106+50.30' LT.
179	STA. 303+73.12' LT. TO STA. 106+50.32' RT.

INSTALL MODIFIED COMBINATION CURB AND GUTTER (HOWARD COUNTY DETAIL R-3.01)	
LF	STATION/OFFSET
83	STA. 302+00.12' RT. TO STA. 302+83.15' RT.
173	STA. 302+00.15' LT. TO STA. 303+73.12' LT.

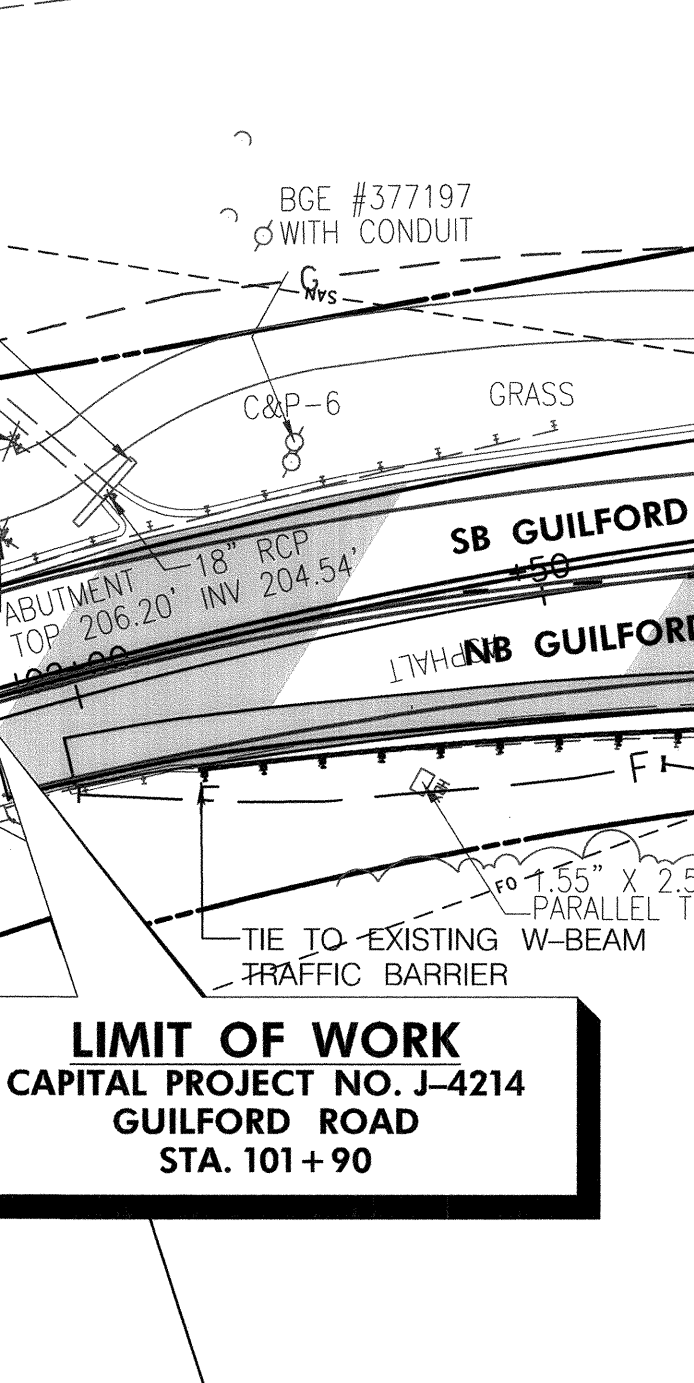
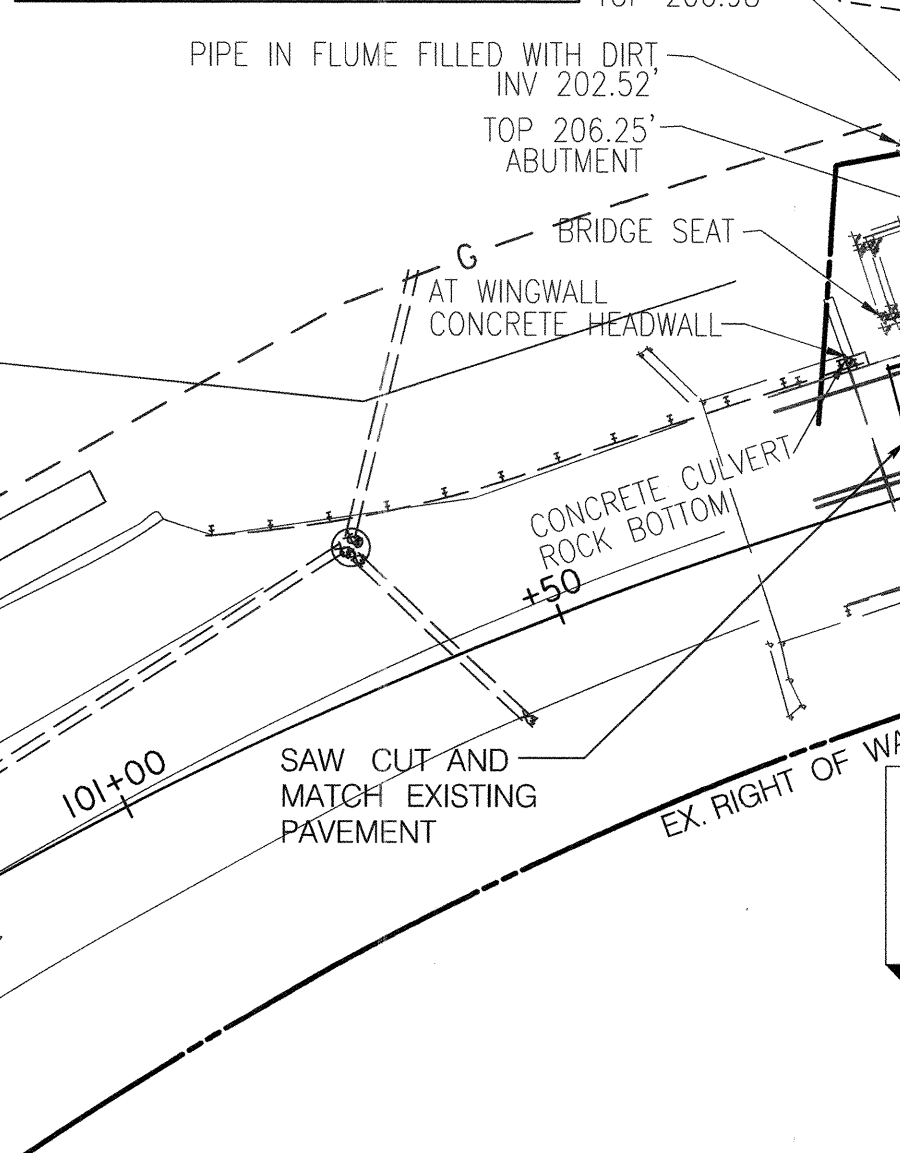
CLASS II RIPRAP, D50 = 16", 32" THICK	
SY	STATION/OFFSET
57	STA. 301+65.24' LT. TO STA. 302+07.37' LT.

CLASS I RIPRAP, D50 = 9.5", 19" THICK	
SY	STATION/OFFSET
11	STA. 301+71.15' RT. TO STA. 301+81.15' RT.

**OF CONSTRUCTION**  
**MARY LANE/VOLLMERHAUSEN ROAD**  
 PI STA. 301+75.56 PI STA. 303+07.66  
 $\Delta = 8^{\circ}13'58.21''$  LT.  $\Delta = 3^{\circ}27'30.78''$  RT.  
 $Dc = 5^{\circ}43'46.48''$   $Dc = 2^{\circ}51'53.24''$   
 $L = 143.69'$   $L = 120.73'$   
 $T = 71.97'$   $T = 60.38'$   
 $R = 1000.00'$   $R = 2000.00'$   
 $C = 143.57'$   $C = 120.71'$   
 PC STA. 301+03.59 PRC STA. 302+47.28  
 PRC STA. 302+47.28 PT STA. 303+68.01

**OF CONSTRUCTION**  
**GUILFORD ROAD**  
 PISTA. 102+14.47  
 $\Delta = 38^{\circ}17'19.26''$  RT.  
 $Dc = 11^{\circ}48'48.33''$   
 $L = 324.11'$   
 $T = 168.37'$   
 $R = 485.00'$   
 $C = 318.11'$   
 PC STA. 100+46.11  
 PT STA. 103+70.21

6'x8' CONCRETE BUS STOP PAD SEE DETAIL ON SHEET TS-03	
SF	STATION/OFFSET
48	STA. 105+94 TO STA. 106+02.40' LT.
48	STA. 106+19 TO STA. 106+27.40' RT.



MODIFIED MDSA TYPE A CURB VARIABLE HEIGHT	
LF	STATION/OFFSET
11	STA. 300+51.27' RT. TO STA. 300+59.27' RT.
12	STA. 300+47.23' LT. TO STA. 300+56.23' LT.
104	STA. 105+59.37' LT. TO STA. 106+50.37' LT.

REMOVE /RELOCATE FIRE HYDRANT	
EA	STATION/OFFSET
1	STA. 104+54.30' RT.

DETECTABLE WARNING SURFACE STD. R-4.07	
SF	STATION/OFFSET
11	STA. 104+75.52' LT.
11	STA. 105+27.52' LT.
12	STA. 105+50.34' LT.
12	STA. 105+47.34' RT.

SIDEWALK RAMP	
STATION	TYPE
STA. 104+75.52' LT.	SEE DET. 1 ON SHT. 6
STA. 105+27.52' LT.	SEE DET. 2 ON SHT. 6
STA. 105+50.34' LT.	SEE DET. 2 ON SHT. 6
STA. 105+47.34' RT.	C R-4.04

INSTALL MD SHA STD. TYPE 'C' TRAFFIC BARRIER END TREATMENT	
EA	STATION/OFFSET
1	STA. 302+22.13' RT. TO STA. 302+72.16' RT.
1	STA. 302+10.18' LT. TO STA. 302+60.18' LT.

TEST PIT DATA					
NO.	STA.	OFFSET	GND. ELEV.	COVER	UTILITY
TH-1	104+40.6	24.1	210.415	3.38'	4-1/2" FIBER OPTIC DUCT (PLASTIC)
TH-2	104+53.6	17.1	211.706	4.60'	12" x 8" WATER TEE D.I.
TH-3	104+80.1	43.4	210.376	4.40'	8" WATER D.I.
TH-4	105+08.1	30.7	210.376	4.40'	NO TEST PIT AVAILABLE
TH-5	105+84.7	16.1	212.027	3.90'	12" WATER D.I.
TH-12	104+52.0	22.0	212.09	2.92'	4" GAS MAIN (PL)
TH-13	104+56.3	29.0	210.77	2.26'	4" GAS MAIN (PL)
TH-14	104+51.0	38.1	213.44	DRY	GAS MAIN
TH-15	105+04.3	22.7	212.77	3.37'	4" GAS MAIN (PL)
TH-16	104+79.2	42.8	213.05	4.84'	12" WATER D.I.

FULL DEPTH PAVEMENT	
SY	STATION
569	STA. 101+97 RT. TO STA. 106+50 RT. (INCL. MARY LANE)
171	STA. 104+36 LT. TO STA. 106+50 LT. (INCL. VOLLMERHAUSEN RD)

INSTALL MD SHA STD. TYPE 'K' TRAFFIC BARRIER END TREATMENT	
EA	STATION/OFFSET
1	STA. 106+18.42' RT.

INSTALL 4 INCH CONCRETE SIDEWALK (HOWARD COUNTY DETAIL R-3.05)	
SF	STATION/OFFSET
368	STA. 104+36.20' LT. TO STA. 104+74.68' LT.
759	STA. 105+25.71' LT. TO STA. 106+50.33' RT.
474	STA. 301+47.38' LT. TO STA. 106+30.33' RT.

INSTALL W-BEAM TRAFFIC BARRIER USING 6 FT. POST - MD STD. 605.25	
LF	STATION/OFFSET
340	STA. 102+10.11' RT. TO STA. 302+22.13' RT.
150	STA. 302+10.18' LT. TO STA. 106+18.42' RT.

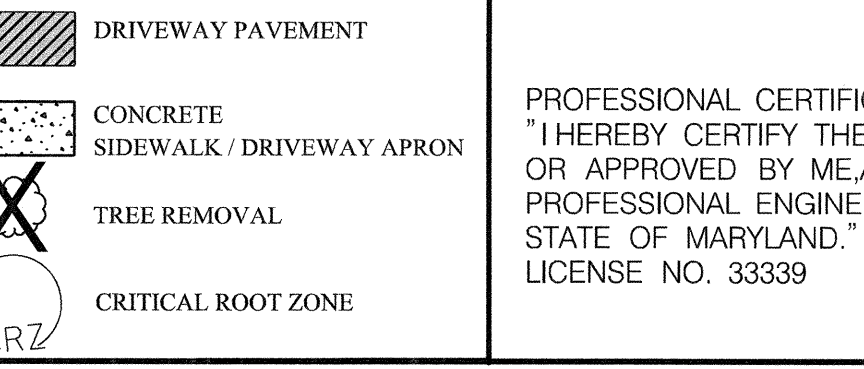
REMOVE AND DISPOSE EXISTING W-BEAM TRAFFIC BARRIER	
LF	STATION/OFFSET
54	STA. 301+70.23' RT. TO STA. 302+17.18' RT.
90	STA. 301+55.6' LT. TO STA. 302+43.9' LT.

GRIND AND RESURFACE	
SY	STATION
1880	STA. 101+90 LT. RT. TO STA. 106+50 LT. / RT.
444	STA. 301+50 LT. RT. TO STA. 303+73 LT. / RT.
153	STA. 300+12 LT. RT. TO STA. 300+50 LT. / RT.

PERVIOUS CONC. SIDEWALK	
SF	STATION/OFFSET
576	STA. 301+47 TO STA. 302+54 LT.
410	STA. 302+91 TO STA. 303+73 LT.

SAW CUTTING	
SF	STATION/OFFSET
280	STA. 101+97.4' RT. TO STA. 104+70.25' RT.
72	STA. 104+22.14' LT. TO STA. 300+63.18' RT.
173	STA. 300+42.12' LT. TO STA. 106+50.24' LT.
392	STA. 303+73.7' LT. TO STA. 106+50.12' RT.

UTILITY ADJUSTMENTS		
EA	STATION/OFFSET	REMARKS
1	STA. 104+70.44' LT.	SD MANHOLE EX. TOP 213.44 PROP. TOP 214.00
1	STA. 105+15.96' RT.	SS MANHOLE EX. TOP 210.68 PROP. TOP 217.86
1	STA. 105+08.51' RT.	SS MANHOLE EX. TOP 210.32 PROP. TOP 210.53
1	STA. 105+15.33' RT.	ELEC. MANHOLE EX. TOP 211.46 PROP. TOP 212.65



PROFESSIONAL CERTIFICATION:  
 "I HEREBY CERTIFY THESE DOCUMENTS WERE PREPARED OR APPROVED BY ME AND THAT I AM A DULY LICENSED PROFESSIONAL ENGINEER UNDER THE LAWS OF THE STATE OF MARYLAND."  
 LICENSE NO. 33339 EXPIRATION DATE: 08-02-2020

PREPARED BY  
**URS**  
 HUNT VALLEY, MARYLAND

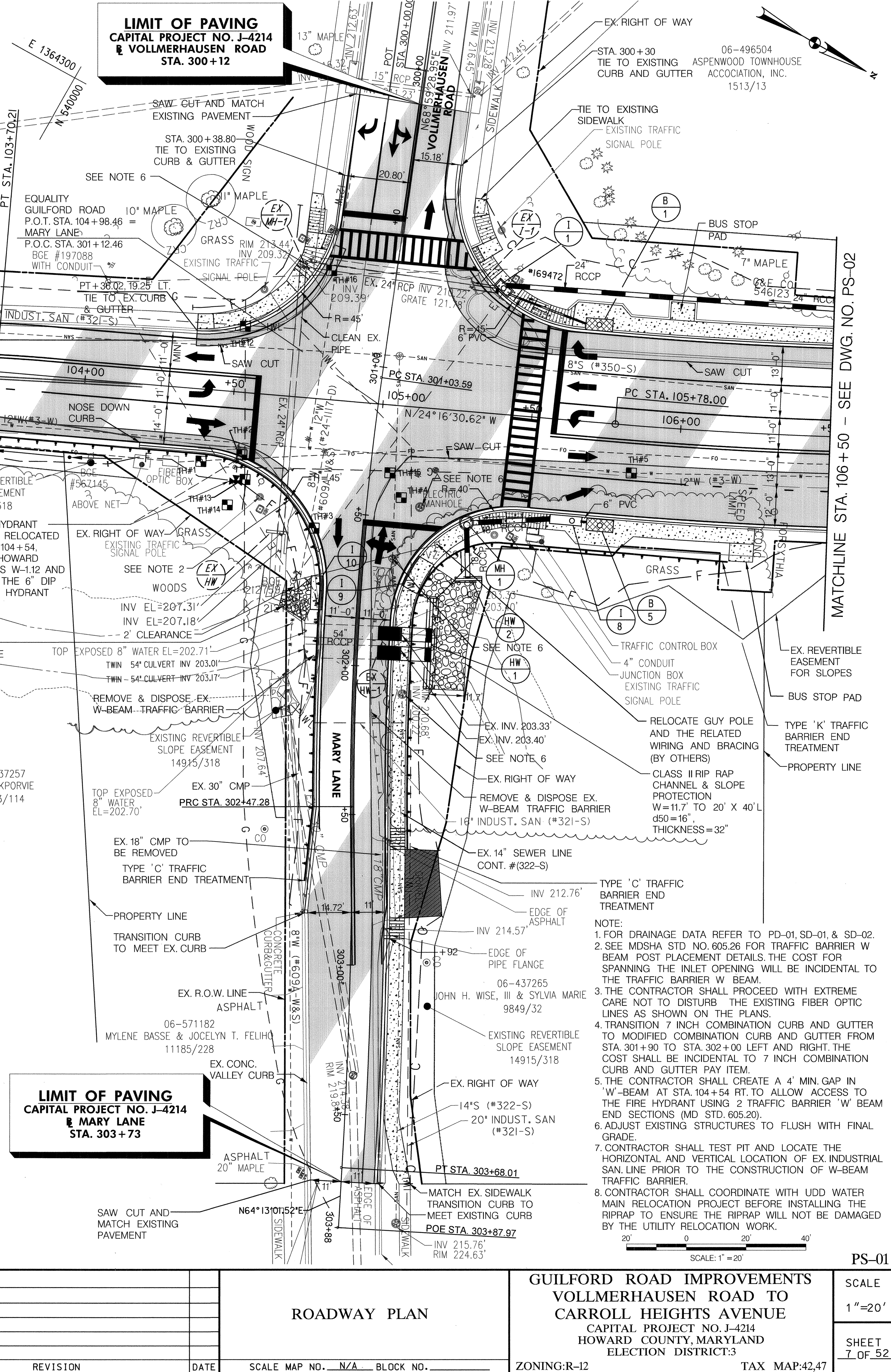
REVIEWED:  
 DATE:  
 DES: FL  
 DRN: EAS  
 CHK: PL  
 DATE: 06/17

DEPARTMENT OF PUBLIC WORKS  
 HOWARD COUNTY, MARYLAND  
 DIRECTOR OF PUBLIC WORKS  
 CHIEF, TRANSPORTATION AND SPECIAL PROJECTS DIVISION

CHIEF, BUREAU OF HIGHWAYS  
 CHIEF, BUREAU OF ENGINEERING

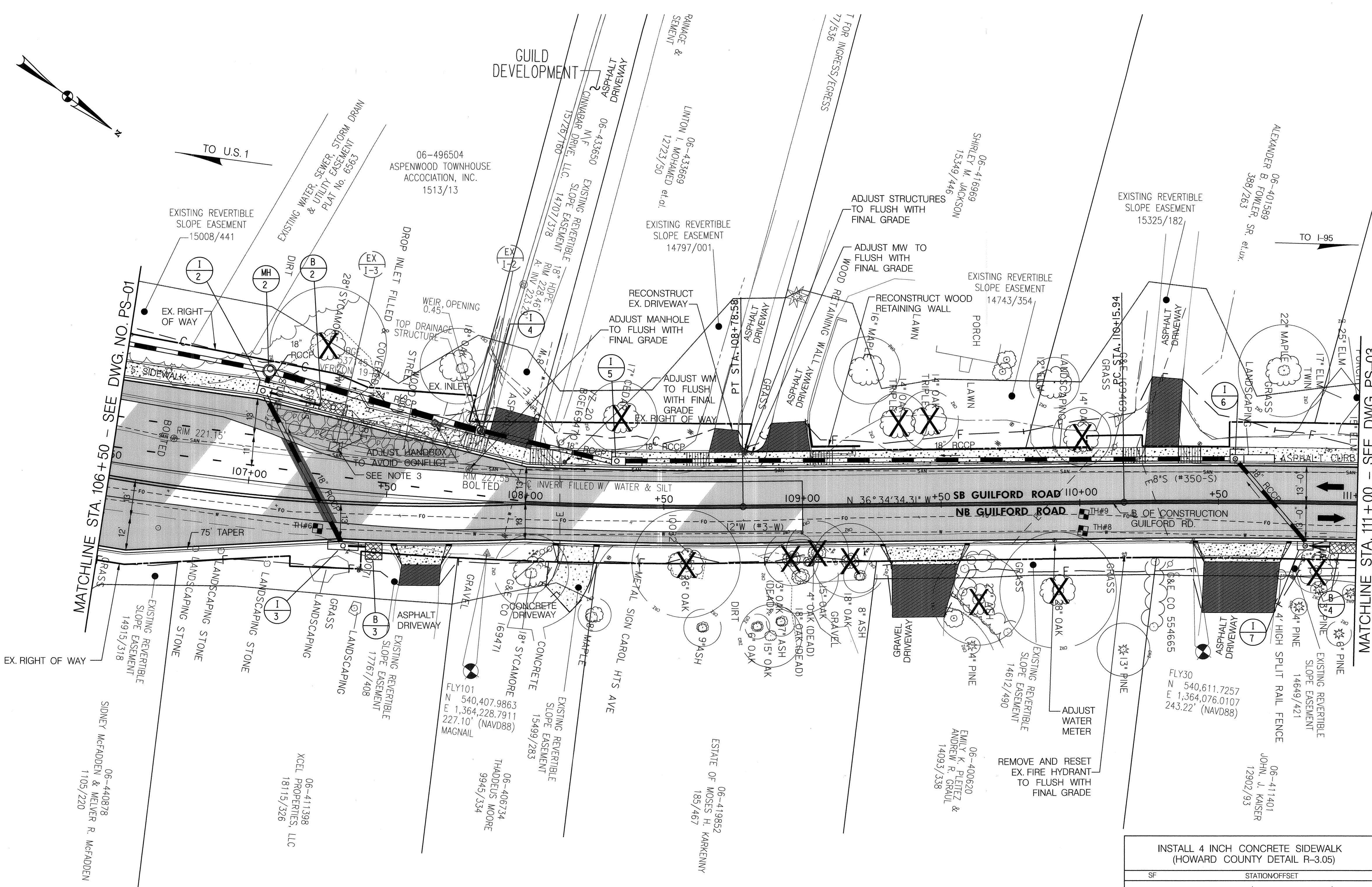
SABRA & ASSOCIATES, INC.  
 7055 SAMUEL MORSE DRIVE  
 SUITE 100  
 COLUMBIA, MD 21046  
 (443)741-3500  
 WWW.SABRA-ASSOCIATES.COM

STATE OF MARYLAND  
 PROFESSIONAL ENGINEER



OF CONSTRUCTION  
GUILFORD ROAD  
PISTA. 107+28.87  
Δ = 12°18'03" LT.  
Dc = 04°05'33.20"  
L = 300.5707'  
T = 150.8653'  
R = 1400.00'  
C = 299.99  
PC STA. 105+78.00  
PT STA. 107+28.87

OF CONSTRUCTION  
GUILFORD ROAD  
PISTA. 112+2.94  
Δ = 09°00'40" RT.  
Dc = 02°17'30.59"  
L = 393.1915'  
T = 197.0020'  
R = 2500.00'  
C = 392.7863  
PC STA. 110+15.94  
PT STA. 114+09.13



RECONSTRUCT WOOD RETAINING WALL	
LF	STATION/OFFSET
48	STA. 109+03.17 TO STA. 109+19.17

\*SEE DETAIL ON TS-03

SAW CUTTING	
LF	STATION/OFFSET
250	STA. 106+50.37 RT. TO STA. 109+00.10' RT.
252	STA. 106+50.29' LT. TO STA. 109+00.9' LT.
19	STA. 109+00.10' RT. TO STA. 109+00.9' LT.

MODIFIED MDSA TYPE A CURB VARIABLE HEIGHT	
LF	STATION/OFFSET
137	STA. 106+50.37' LT. TO STA. 107+85.23' LT.
64	STA. 108+01.20' LT. TO STA. 108+66.20' LT.

\*SEE DETAIL ON TS-03

UTILITY ADJUSTMENTS		
EA	STATION/OFFSET	REMARKS
1	STA. 107+65.27' LT.	UTILITY HANDBOX
1	STA. 107+79.11' LT.	SS MANHOLE EX. TOP 227.55 PROP. TOP 228.27
1	STA. 108+14.15' LT.	WATER METER
1	STA. 108+80.19' LT.	WATER VALVE
1	STA. 108+82.19' LT.	WATER METER

NOTE: THIS ITEM PAID IS FOR UNDER UTILITY ADJUSTMENTS

REMOVE AND RESET EX. FIRE HYDRANT		
EA	STATION/OFFSET	REMARKS
1	STA. 110+16.19' RT.	FIRE HYDRANT

NOTE: THIS ITEM PAID IS FOR UNDER REMOVE AND RESET EX. FIRE HYDRANT

- NOTES:
- STA. 111+00±LT. AND STA. 109+20±LT. CONTRACTOR TO TAKE CARE NOT TO DISTURB WOOD DECK WHEN REMOVING EXISTING TREES.
  - ALL WATER AND SEWER HOUSE CONNECTIONS AND FIBER OPTIC CROSSINGS IN VICINITY OF THE LONGITUDINAL STORM DRAIN SYSTEM I-1 TO I-6, AND CROSSING PIPES FROM I-2 TO I-3 AND FROM I-6 TO I-7 SHALL BE DESIGNATED (LOCATED) AND TEST PITTED PRIOR TO THE PIPE INSTALLATION. IN THE EVENT A CONFLICT EXISTS, THE COUNTY MUST BE NOTIFIED, TEST PIT PRIOR TO ORDERING DRAINAGE STRUCTURES TO ALLOW FOR POSSIBLE FIELD ADJUSTMENTS.
  - INLET NOT VISIBLE IN THE FIELD, IF PRESENT, IT SHALL BE REMOVED.
  - FOR DRAINAGE DATA REFER TO PD-01, SD-01, & SD-02.

MATCHLINE STA. 106+50 - SEE DWG. NO. PS-01

MATCHLINE STA. 111+00 - SEE DWG. PS-03

ROADWAY LEGEND	
	FULL DEPTH RECONSTRUCTION
	GRINDING AND RESURFACING
	DRIVEWAY PAVEMENT
	CONCRETE SIDEWALK / DRIVEWAY APRON
	TREE REMOVAL
	CRITICAL ROOT ZONE

PROFESSIONAL CERTIFICATION:  
"I HEREBY CERTIFY THESE DOCUMENTS WERE PREPARED OR APPROVED BY ME AND THAT I AM A DULY LICENSED PROFESSIONAL ENGINEER UNDER THE LAWS OF THE STATE OF MARYLAND."  
LICENSE NO. 33339 EXPIRATION DATE: 08-02-2020

RELOCATE MAIL BOX - AS DIRECTED BY THE ENGINEER			
EA	STATION/OFFSET	EA	STATION/OFFSET
1	108+02 RT.	1	109+10 RT.
1	108+04 RT.	1	109+22 RT.
1	108+60 RT.	1	110+85 RT.

UTILITY PATCH	
SY	STATION/OFFSET
15	STA. 107+10 TO STA. 107+34, LT. & RT.

NOTE: THE COST SHALL BE INCIDENTAL TO THE RELATED UTILITY PAY ITEM.

GRIND AND RESURFACE	
SY	STATION
642	STA. 106+50.17 RT. TO STA. 109+00.17 RT.

FULL DEPTH PAVEMENT	
SY	STATION
200	STA. 106+50 RT. TO STA. 109+00 RT. (WIDENING)
196	STA. 106+50 LT. TO STA. 109+00 LT. (WIDENING)
578	STA. 109+00 LT. RT. TO STA. 111+00 LT. RT.

INSTALL 7 INCH COMBINATION CURB AND GUTTER (HOWARD COUNTY DETAIL R-3.01)	
LF	STATION/OFFSET
455	STA. 106+50.32' RT. TO STA. 111+00.14' RT.
450	STA. 106+50.31' LT. TO STA. 111+00.14' LT.

TEST PIT DATA					
NO.	STA.	OFFSET	GND. ELEV.	COVER	UTILITY
TH-6	107+26.5	15.2' RT.	224.494	3.84'	12" WATER D.I.
TH-8	110+01.0	10.1' RT.	241.057	3.75'	12" WATER D.I.
TH-9	110+01.0	2.0' LT.	240.257	4.60'	4 - 1/2" FIBER OPTIC DUCTS (PLASTIC)

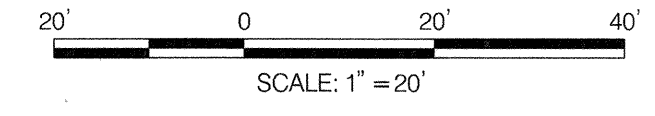
INSTALL 4 INCH CONCRETE SIDEWALK (HOWARD COUNTY DETAIL R-3.05)	
SF	STATION/OFFSET
606	STA. 106+50.34' LT. TO STA. 107+77.20' LT.
209	STA. 108+09.16' LT. TO STA. 108+58.15' LT.
524	STA. 109+11.15' LT. TO STA. 110+15.15' LT.
247	STA. 110+44.15' LT. TO STA. 111+00.15' LT.

7 INCH REINFORCED CONCRETE FOR DRIVEWAY (HOWARD CO. STD. DETAIL R-6.02)	
SY	STATION/OFFSET
18	STA. 107+77.20' LT. TO STA. 108+09.15' LT.
30	STA. 108+58.15' LT. TO STA. 109+11.15' LT.
16	STA. 110+16.15' LT. TO STA. 110+43.15' LT.

7 INCH REINFORCED CONCRETE FOR DRIVEWAY (HOWARD CO. STD. DETAIL R-6.05)	
SY	STATION/OFFSET
14	STA. 107+53.18' RT. TO STA. 107+75.17' RT.
32	STA. 108+12.14' RT. TO STA. 108+27.14' RT.
22	STA. 109+28.15' RT. TO STA. 109+60.15' RT.
24	STA. 110+41.14' RT. TO STA. 110+76.14' RT.

ASPHALT DRIVEWAY RECONSTRUCTION (HOWARD CO. STD. DETAIL R-6.05)	
SY	STATION/OFFSET
12	STA. 107+57.31' RT. TO STA. 107+71.31' RT.
45	STA. 109+32.40' RT. TO STA. 109+56.40' RT.
55	STA. 110+45.40' RT. TO STA. 110+72.40' RT.

ASPHALT DRIVEWAY RECONSTRUCTION (HOWARD CO. STD. DETAIL R-6.02)	
SY	STATION/OFFSET
20	STA. 107+85.33' LT. TO STA. 108+01.30' LT.
10	STA. 108+66.29' LT. TO STA. 108+80.29' LT.
17	STA. 108+80.20' LT. TO STA. 109+03.20' LT.
32	STA. 110+24.20' LT. TO STA. 110+36.20' LT.



PREPARED BY  
**URS**  
HUNT VALLEY, MARYLAND

REVIEWED:  
DATE: 06/17

DES: FL  
DRN: EAS  
CHK: PL  
DATE: 06/17

BY NO. REVISION DATE

DEPARTMENT OF PUBLIC WORKS  
HOWARD COUNTY, MARYLAND

4/16/19  
DIRECTOR OF PUBLIC WORKS

4/16/19  
CHIEF, BUREAU OF HIGHWAYS

4/16/19  
CHIEF, TRANSPORTATION AND SPECIAL PROJECTS DIVISION

4/16/19  
CHIEF, BUREAU OF ENGINEERING

SABRA & ASSOCIATES, INC.  
7055 SAMUEL MORSE DRIVE  
SUITE 100  
COLUMBIA, MD 21046  
(443)741-3500  
WWW.SABRA-ASSOCIATES.COM

STATE OF MARYLAND  
PROFESSIONAL ENGINEER  
NO. 33339

DEPARTMENT OF PUBLIC WORKS  
HOWARD COUNTY, MARYLAND

4/16/19  
DIRECTOR OF PUBLIC WORKS

4/16/19  
CHIEF, BUREAU OF HIGHWAYS

4/16/19  
CHIEF, TRANSPORTATION AND SPECIAL PROJECTS DIVISION

4/16/19  
CHIEF, BUREAU OF ENGINEERING

ROADWAY PLAN

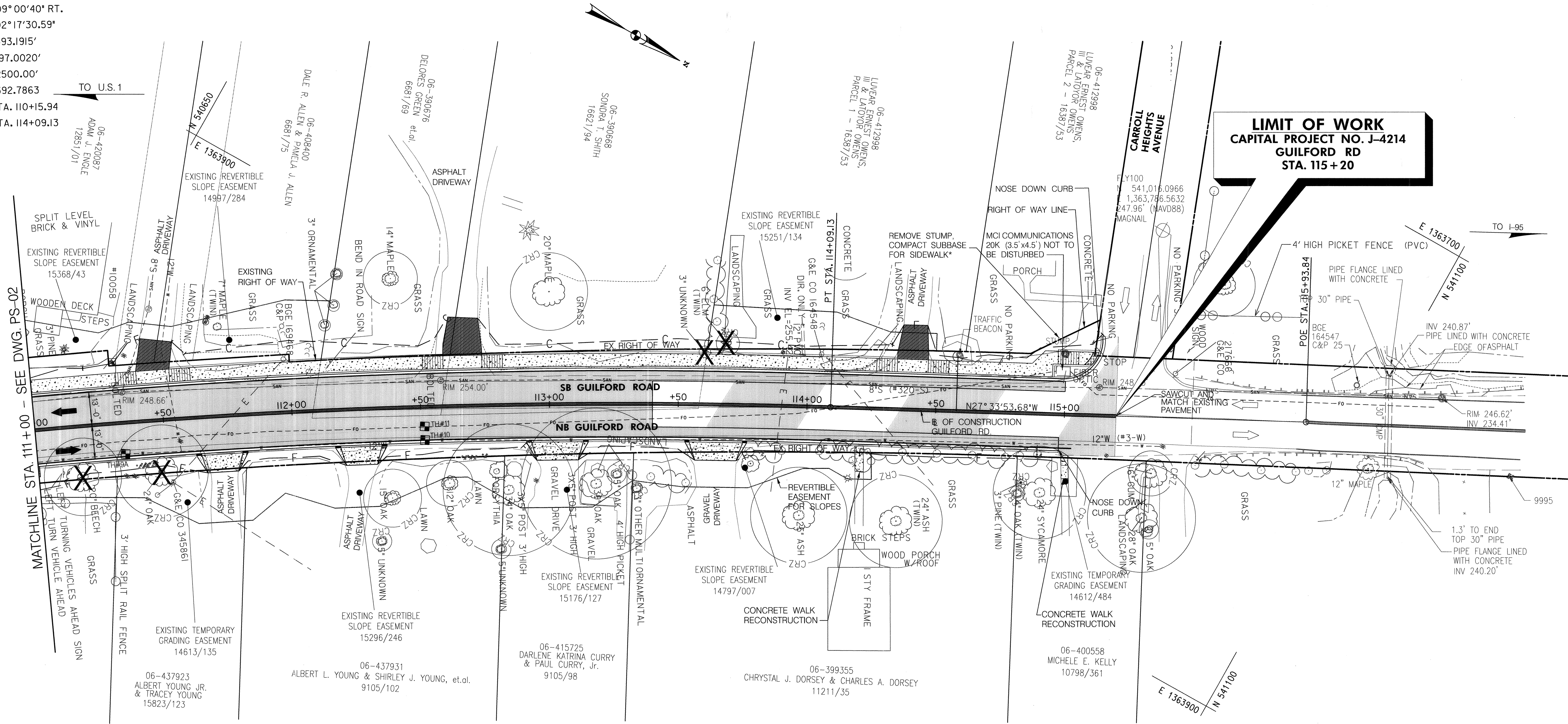
SCALE MAP NO. N/A BLOCK NO.

GUILFORD ROAD IMPROVEMENTS  
VOLLMERHAUSEN ROAD TO  
CARROLL HEIGHTS AVENUE  
CAPITAL PROJECT NO. J-4214  
HOWARD COUNTY, MARYLAND  
ELECTION DISTRICT 3

SCALE 1" = 20'  
SHEET 8 OF 52

ZONING: R-12 TAX MAP: 42.47

OF CONSTRUCTION  
 GUILFORD ROAD  
 PISTA. 112+12.94  
 Δ = 09° 00' 40" RT.  
 Dc = 02° 17' 30.59"  
 L = 393.1915'  
 T = 197.0020'  
 R = 2500.00'  
 C = 392.7863  
 PC STA. 110+15.94  
 PT STA. 114+09.13



**LIMIT OF WORK**  
 CAPITAL PROJECT NO. J-4214  
 GUILFORD RD  
 STA. 115+20

MATCHLINE STA. 111+00 - SEE DWG. PS-02

RELOCATE MAIL BOX - AS DIRECTED BY THE ENGINEER			
1 EA.	111+38 RT.	1 EA.	112+65 RT.
2 EA.	111+40 RT.	1 EA.	112+68 RT.
1 EA.	111+41 RT.	1 EA.	112+70 RT.
1 EA.	111+43 RT.	1 EA.	112+73 RT.
1 EA.	111+46 RT.	1 EA.	113+80 RT.
		1 EA.	114+90 RT.

FULL DEPTH PAVEMENT		
SY	STATION	
835	STA. 111+00, LT. RT. TO STA. 115+15, LT. RT.	

7 INCH REINFORCED CONCRETE FOR DRIVEWAY (HOWARD CO. STD. DETAIL R-6.02)		
SY	STATION/OFFSET	
16	STA. 111+33, 15' LT. TO STA. 111+61, 15' LT.	
16	STA. 112+51, 15' LT. TO STA. 112+82, 15' LT.	
16	STA. 114+27, 15' LT. TO STA. 114+55, 15' LT.	

7 INCH REINFORCED CONCRETE FOR DRIVEWAY (HOWARD CO. STD. DETAIL R-6.05)		
SY	STATION/OFFSET	
13	STA. 111+62, 15' RT. TO STA. 111+82, 15' RT.	
13	STA. 112+16, 15' RT. TO STA. 112+36, 15' RT.	
16	STA. 112+91, 15' RT. TO STA. 113+15, 15' RT.	
16	STA. 113+53, 15' RT. TO STA. 113+77, 15' RT.	

ASPHALT DRIVEWAY RECONSTRUCTION (HOWARD CO. STD. DETAIL R-6.02)		
SY	STATION/OFFSET	
16	STA. 111+41, 23' LT. TO STA. 111+54, 23' LT.	
22	STA. 112+60, 20' LT. TO STA. 112+74, 20' LT.	
16	STA. 114+35, 23' LT. TO STA. 114+46, 23' LT.	

GRIND AND RESURFACE	
SY	STATION
401	STA. 113+40, LT. RT. TO STA. 115+20, LT. RT.

INSTALL 7 INCH COMBINATION CURB AND GUTTER (HOWARD COUNTY DETAIL R-3.01)		
LF	STATION/OFFSET	
426	STA. 111+00, 14' LT. TO STA. 115+08, 14' LT.	
396	STA. 111+00, 14' RT. TO STA. 114+98, 14' RT.	

INSTALL 4 INCH CONCRETE SIDEWALK (HOWARD COUNTY DETAIL R-3.05)		
SF	STATION/OFFSET	
165	STA. 111+00, 15' LT. TO STA. 111+33, 15' LT.	
452	STA. 111+61, 15' LT. TO STA. 112+51, 15' LT.	
727	STA. 112+82, 15' LT. TO STA. 114+27, 15' LT.	
35	STA. 114+19, 15' RT. TO STA. 114+22, 24' RT.	
312	STA. 114+55, 15' LT. TO STA. 115+13, 15' LT.	
25	STA. 114+99, 15' RT. TO STA. 115+02, 24' RT.	

SIDEWALK RAMP		
STATION	TYPE	
STA. 115+12, LT.	MOD. TYPE C R-4.04	

DETECTABLE WARNING SURFACE (SEE DETAIL R-4.07)	
10 SF	STATION/OFFSET
	STA. 115+15, 22' LT.

SAW CUTTING	
LF	STATION/OFFSET
15'	STA. 113+40, 9' LT. TO STA. 113+40, 9' RT.
165'	STA. 113+40, 9' RT. TO STA. 115+00, 9' RT.
162'	STA. 113+40, 9' LT. TO STA. 114+98, 9' LT.

MODIFIED MDSA TYPE A CURB VARIABLE HEIGHT		
LF	STATION/OFFSET	
106	STA. 111+54, 20' LT. TO STA. 112+59, 20' LT.	
162	STA. 112+74, 20' LT. TO STA. 114+35, 20' LT.	

\*SEE DETAIL ON TS-03

REMOVE STUMP, COMPACT SUBBASE FOR WALK*	
EA	STATION/OFFSET
1	STA. 115+00, 24' LT.

\*NOTE: STUMP REMOVAL IS INCIDENTAL TO SIDEWALK REMOVAL.

**ROADWAY LEGEND**

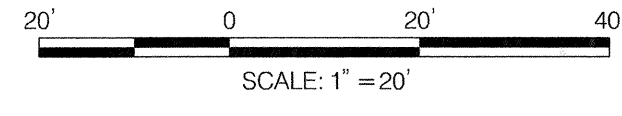
- FULL DEPTH RECONSTRUCTION
- GRINDING AND RESURFACING
- DRIVEWAY PAVEMENT
- CONCRETE SIDEWALK / DRIVEWAY APRON
- TREE REMOVAL
- CRITICAL ROOT ZONE

PROFESSIONAL CERTIFICATION:  
 "I HEREBY CERTIFY THESE DOCUMENTS WERE PREPARED OR APPROVED BY ME AND THAT I AM A DULY LICENSED PROFESSIONAL ENGINEER UNDER THE LAWS OF THE STATE OF MARYLAND."  
 LICENSE NO. 33339      EXPIRATION DATE: 08-02-2020

PREPARED BY  
**URS**  
 HUNT VALLEY, MARYLAND

REVIEWED:  
 DATE:

TEST PIT DATA					
NO.	STA.	OFFSET	GND. ELEV.	COVER	UTILITY
TH-9A	111+34.3	13.0' RT.	249.257	3.38'	12" WATER D.I.
TH-10	112+51.4	12.0' RT.	253.684	4.21'	12" WATER D.I.
TH-11	112+51.4	7.6' RT.	254.068	5.10'	4 - 1 1/2" FIBER OPTIC DUCTS (PLASTIC)



DEPARTMENT OF PUBLIC WORKS  
 HOWARD COUNTY, MARYLAND

Director of Public Works: *John J. Young* 4/10/19  
 Chief, Bureau of Highways: *James J. Young* 4/11/2019  
 Chief, Transportation and Special Projects Division: *Thomas J. Young* 4/10/19  
 Chief, Bureau of Engineering: *Thomas J. Young* 4/10/19

SABRA & ASSOCIATES, INC.  
 7055 SAMUEL MORSE DRIVE  
 SUITE 100  
 COLUMBIA, MD 21046  
 (443)741-3500  
 WWW.SABRA-ASSOCIATES.COM

DES: FL  
 DRN: EAS  
 CHK: PL  
 DATE: 06/17

BY	NO.	REVISION	DATE

ROADWAY PLAN  
 SCALE MAP NO. N/A BLOCK NO. \_\_\_\_\_

GUILFORD ROAD IMPROVEMENTS  
 VOLLMERHAUSEN ROAD TO CARROLL HEIGHTS AVENUE  
 CAPITAL PROJECT NO. J-4214  
 HOWARD COUNTY, MARYLAND  
 ELECTION DISTRICT 3

ZONING: R-12      TAX MAP: 42.47

SCALE: 1"=20'  
 SHEET 9 OF 52