

## Eastbound (Downtown Columbia to Oakland Mills Village Center)

Route distance: 5.1 mi

1. Ride west on the Downtown Columbia Trail 0.4 miles to Broken Land Parkway, then turn left.
2. Ride south 0.3 miles to Hickory Ridge Road, then turn right.
3. Ride west 0.1 miles to Martin Road, then turn left.
4. Ride south 0.4 miles, then continue through the traffic circle.
5. Continue 0.8 miles to Seneca Drive, then turn left.
6. Ride east 0.3 miles, crossing US 29, to Shaker Drive, then turn left.
7. Ride north 0.4 miles to Allview Drive, then turn right.
8. Ride east 400 feet to Amherst Ave, then turn left.
9. Ride north 0.4 miles to Beechwood Drive, then turn left.
10. Ride north 500 feet to Stevens Forest Road, then turn right.
11. Ride east 0.5 miles to Broken Land Parkway, then carefully continue through the intersection.
12. Ride north 1.1 miles to Oakland Mills Village Center

For more project information, visit  
[www.howardcountymd.gov/US29Bridge](http://www.howardcountymd.gov/US29Bridge)



## Westbound (Oakland Mills Village Center to Downtown Columbia)

Route distance: 5.1 mi

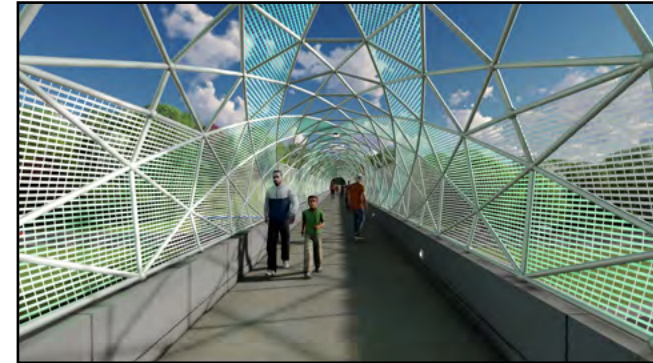
1. Ride south on Stevens Forest Road 1.1 miles to Broken Land Parkway, then carefully continue through the intersection.
2. Ride west 0.5 miles to Beechwood Drive, then turn left.
3. Ride south 500 feet to Amherst Ave, then turn right.
4. Ride south 0.4 miles to Allview Drive, then turn right.
5. Right west 400 feet to Shaker Drive, then turn left.
6. Ride south 0.4 miles to Seneca Drive, then turn right.
7. Ride west 0.3 miles, crossing US 29, to Martin Road, then turn right.
8. Right north 0.8 miles, then continue through the traffic circle.
9. Continue 0.4 miles to Hickory Ridge Road, then turn right.
10. Ride east 0.1 miles to Broken Land Parkway, then turn left.
11. Right north 0.3 miles, then rejoin the Downtown Columbia Trail.

For more project information, visit  
[www.howardcountymd.gov/US29Bridge](http://www.howardcountymd.gov/US29Bridge)

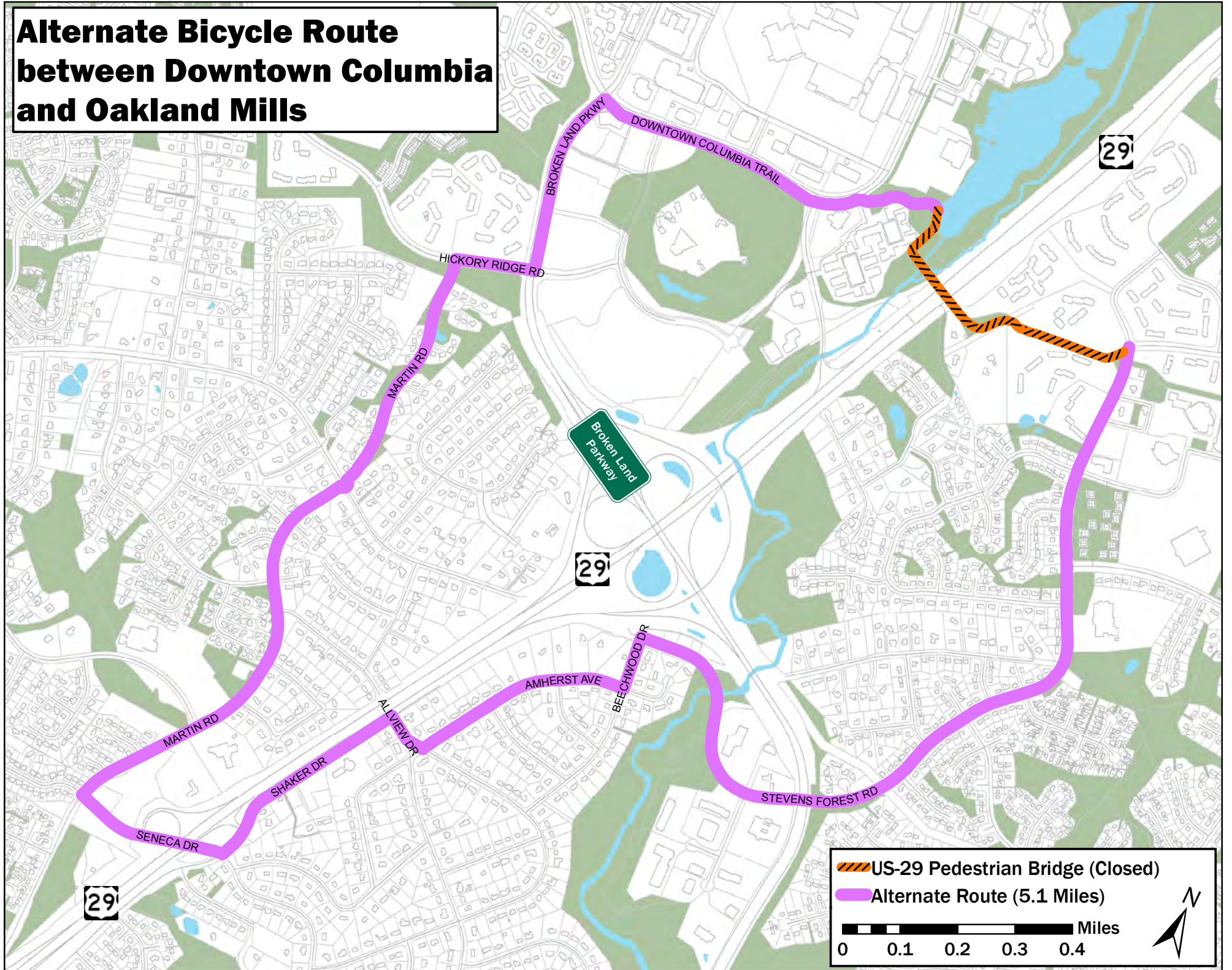


# Cue Sheets for US 29 Bridge Closure Alternate Route

Downtown Columbia ↔ Oakland Mills



# Alternate Bicycle Route between Downtown Columbia and Oakland Mills



 US-29 Pedestrian Bridge (Closed)

 Alternate Route (5.1 Miles)

