

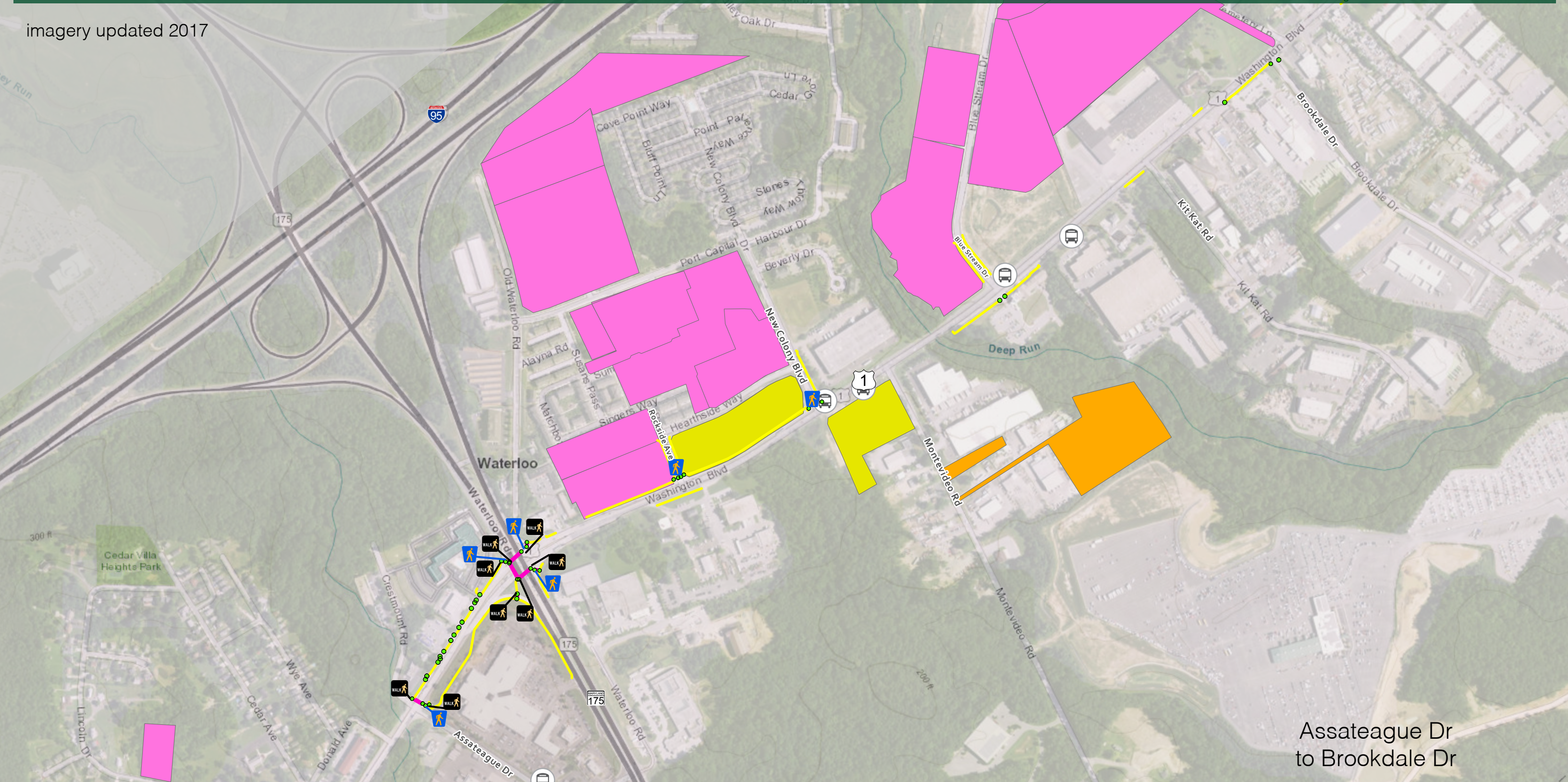


US 1 Safety Evaluation on Bicyclist and Pedestrian Safety

Pedestrian Infrastructure - Focus Area 3

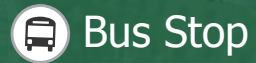


imagery updated 2017



Assateague Dr to Brookdale Dr

LEGEND



Sidewalk

Industrial

Ramp

Residential

Crosswalk

Office

Pedestrian Refuge

Retail

Pedestrian Signal

All pedestrian signals in this area have pedestrian activated push buttons

Data Source:
Howard County
Common Places 2017.

N

