

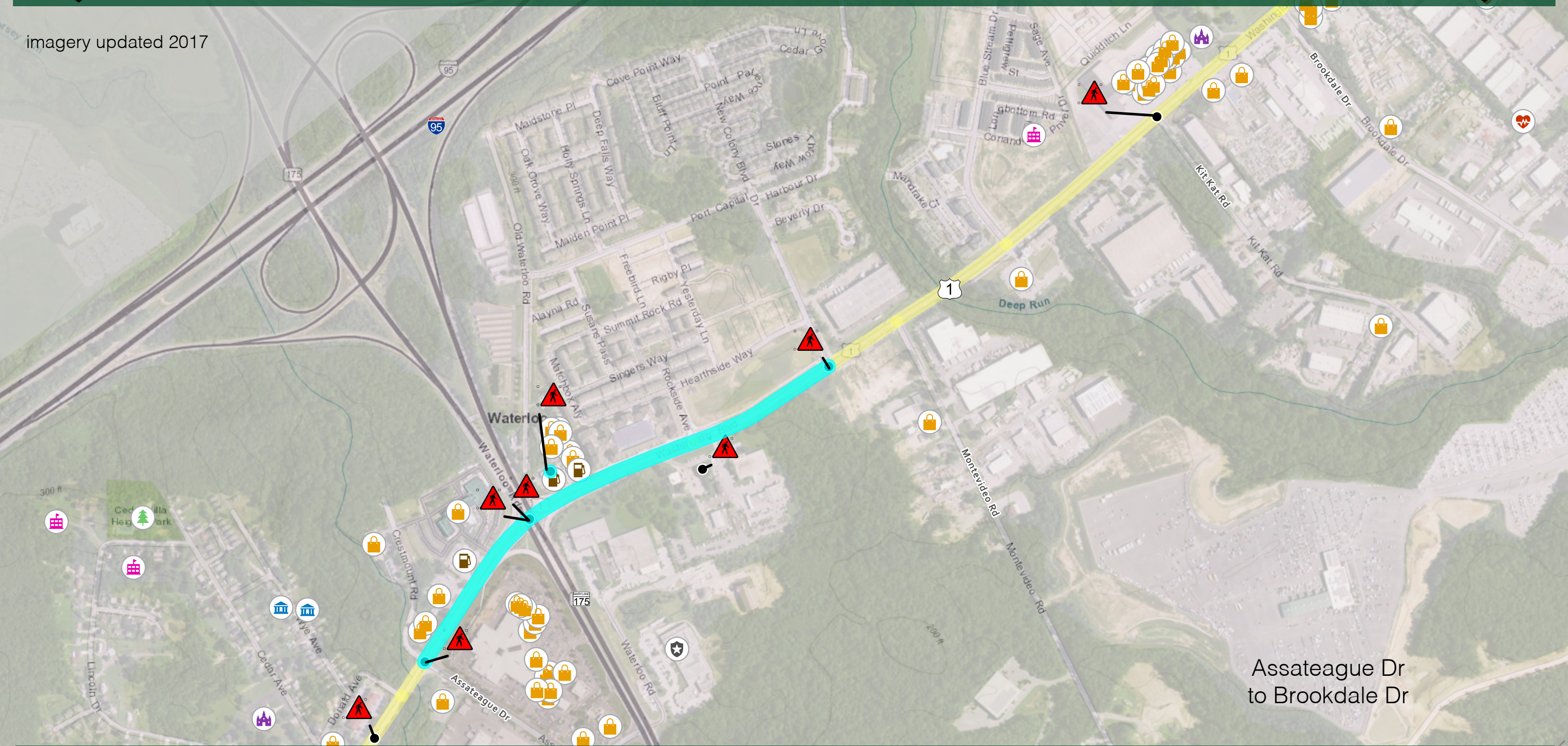


# US 1 Safety Evaluation on Bicyclist and Pedestrian Safety

## Pedestrian Generators & Crashes Involving Pedestrians - Focus Area 3



imagery updated 2017



Assateague Dr  
to Brookdale Dr

### LEGEND

- Crash location
- ▲ Pedestrian Crash

#### Pedestrian Generators

- 🛍️ Retail
- 🏫 Schools
- 🌳 Parks/ Pools
- 🏥 Hospital/ Medical
- 🏠 Senior Centers
- 🏛️ Correctional Facilities
- 🕌 Community & Worship Centers
- 🛒 Convenient Stores/ Gas Stations

Data Source:  
Pedestrian Generators data is from Howard County Common Places 2017. Pedestrian Crash data is from Howard County Police Department ILEADS database 2012-2016 and from the State Highway Administration, 2012-2016.

